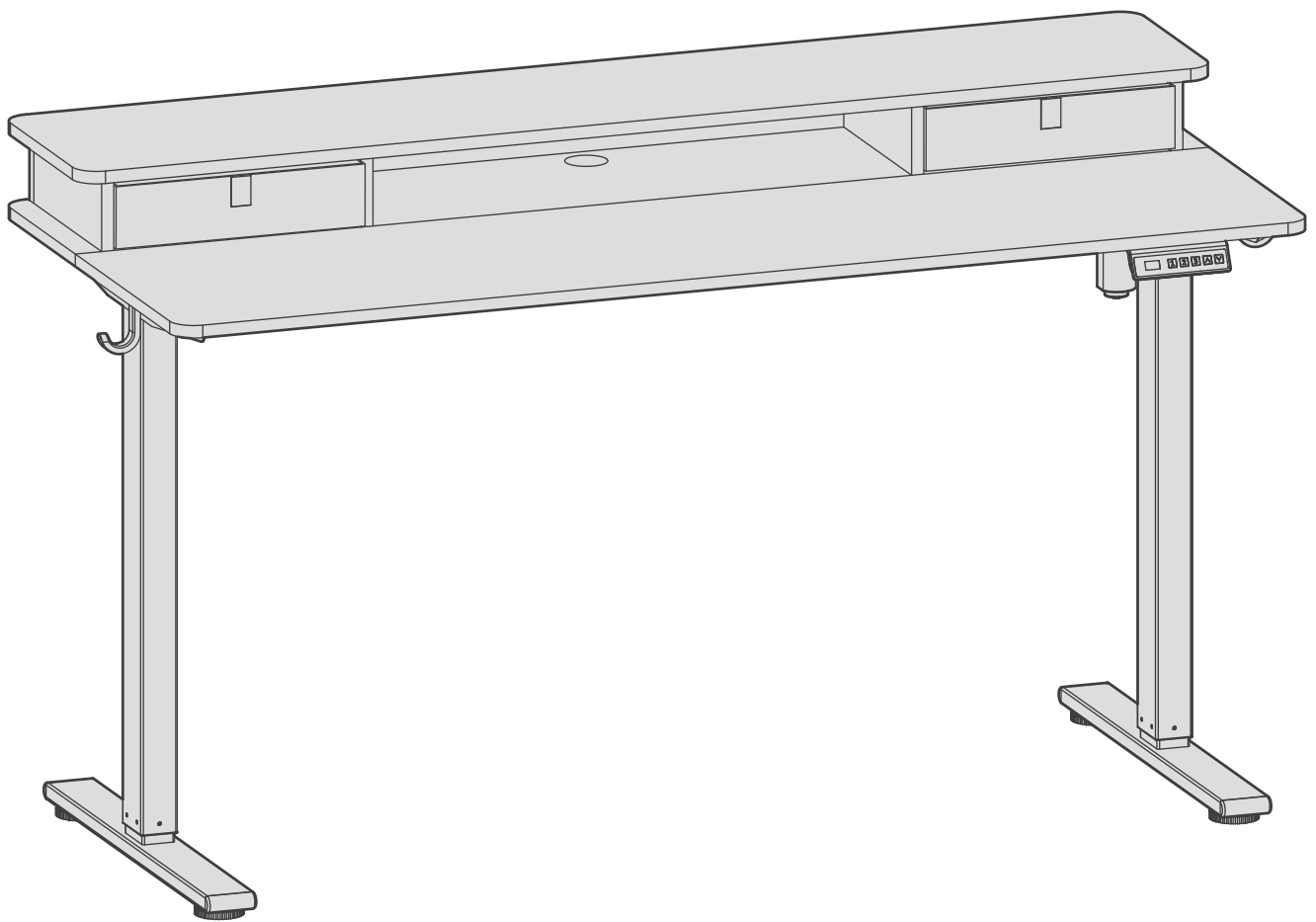


ASSEMBLY INSTRUCTIONS



For assembly assistance,
✉ support@yfs.life 🌐 yfs.life/sde0017-r1

▶ Scan QR code for
installation video





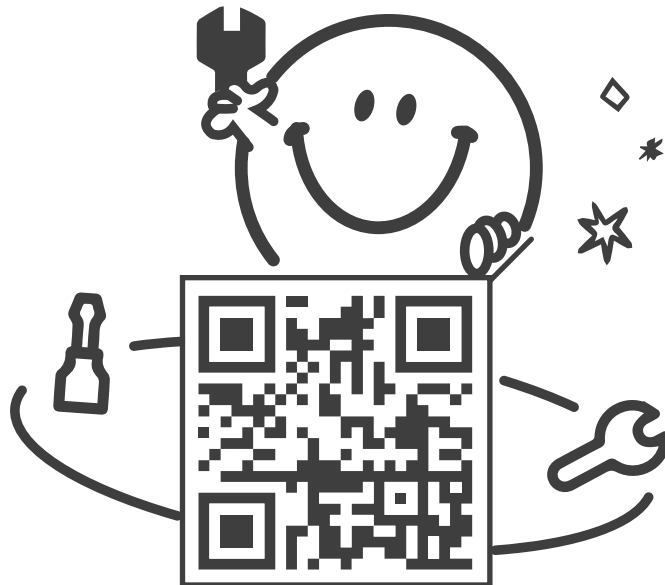
Caution

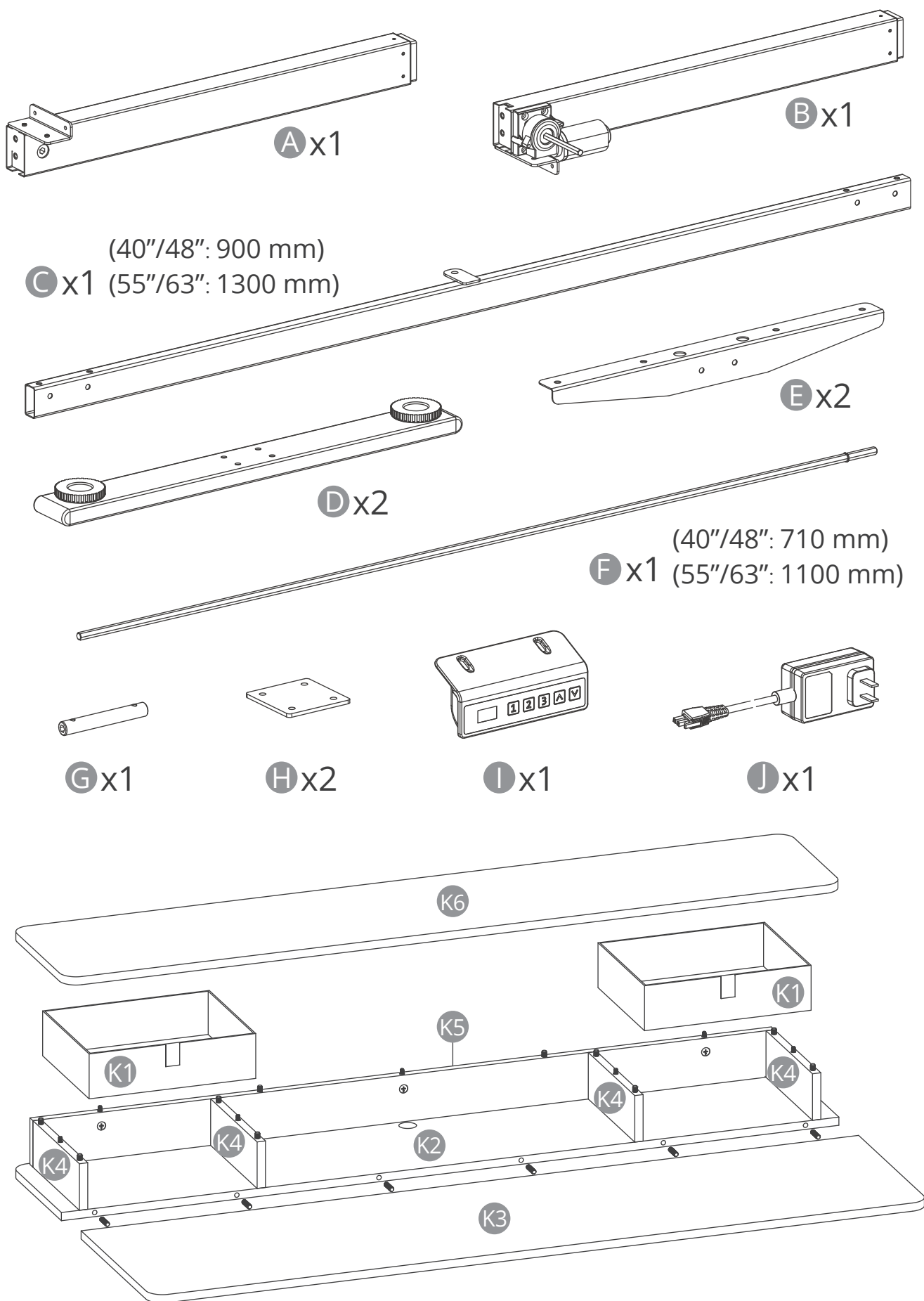
- Keep children and animals away from the desk during use. Ensure the desktop is not touching any walls.
- Remove obstacles taller than 20"/51 cm from underneath the desk.
- Operate only in a working environment temperature of 32°F-104°F/0°C-40°C.
- Keep product away from corrosive gases, liquids and dusty objects.
- Keep hands, feet and other body parts in a safe position during operation. Anti-collision is not automatically enabled during all resets.
- The company does not bear any warranty or liability for damage and human injury caused by any abnormal or un-intended operation of the equipment.
- It is necessary to perform a manual reset after the initial installation or power cycling the equipment.

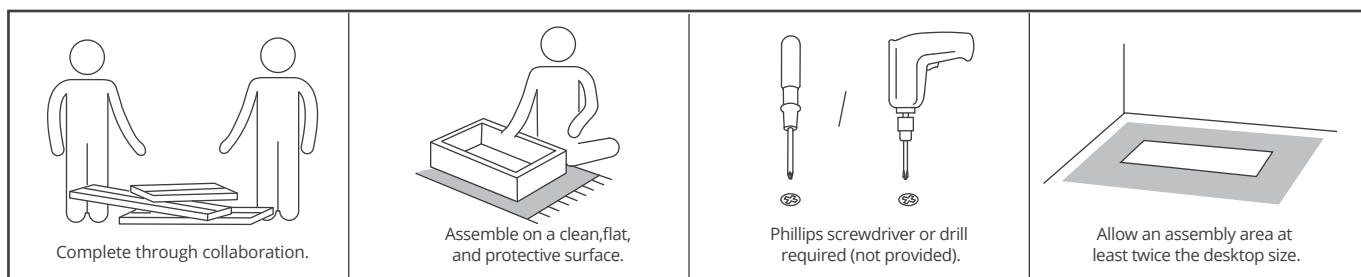
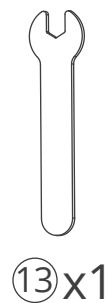
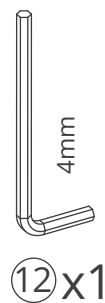
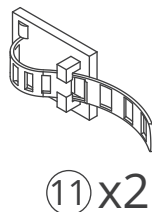
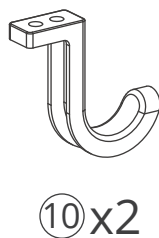
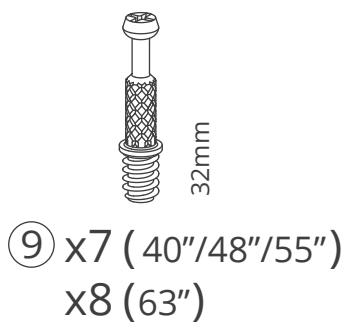
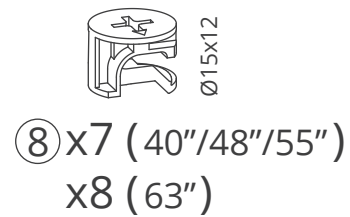
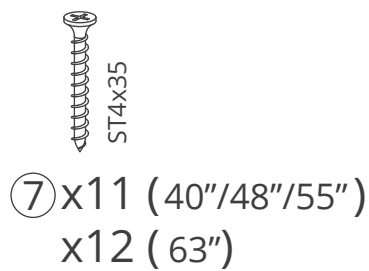
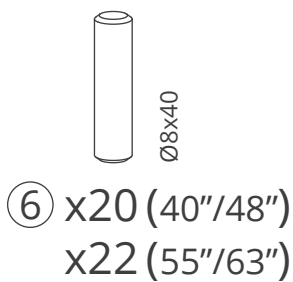
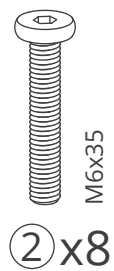
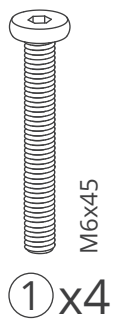
Assembly Guide



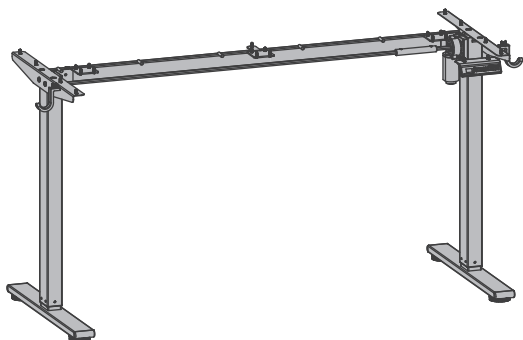
Scan the QR code for installation videos and detailed user instructions.





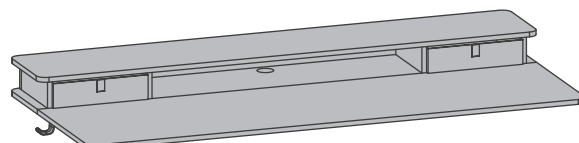


PART A



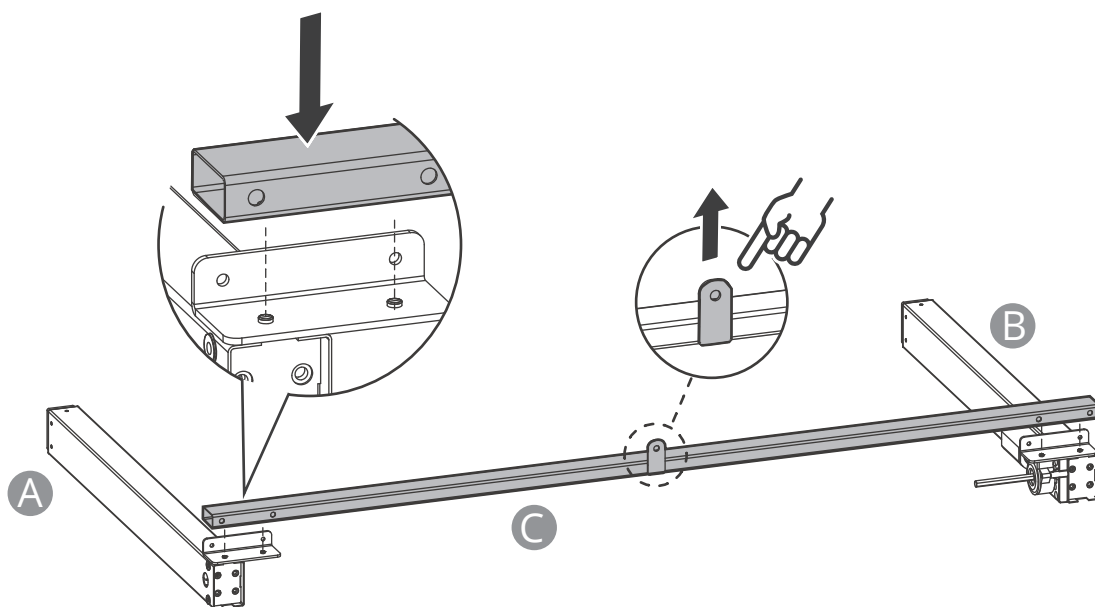
Page 4 - 6

PART B

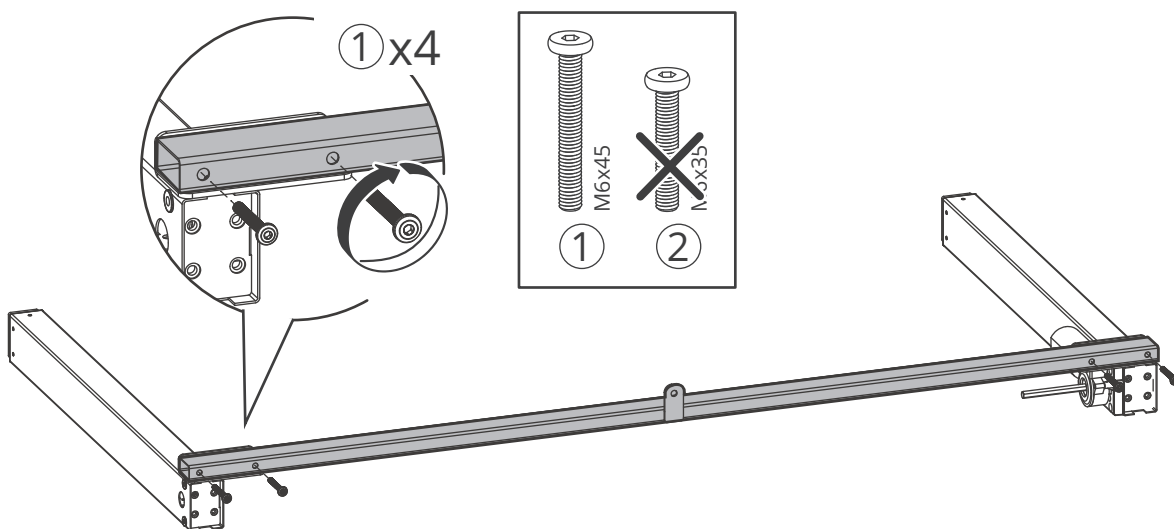


Page 7-15

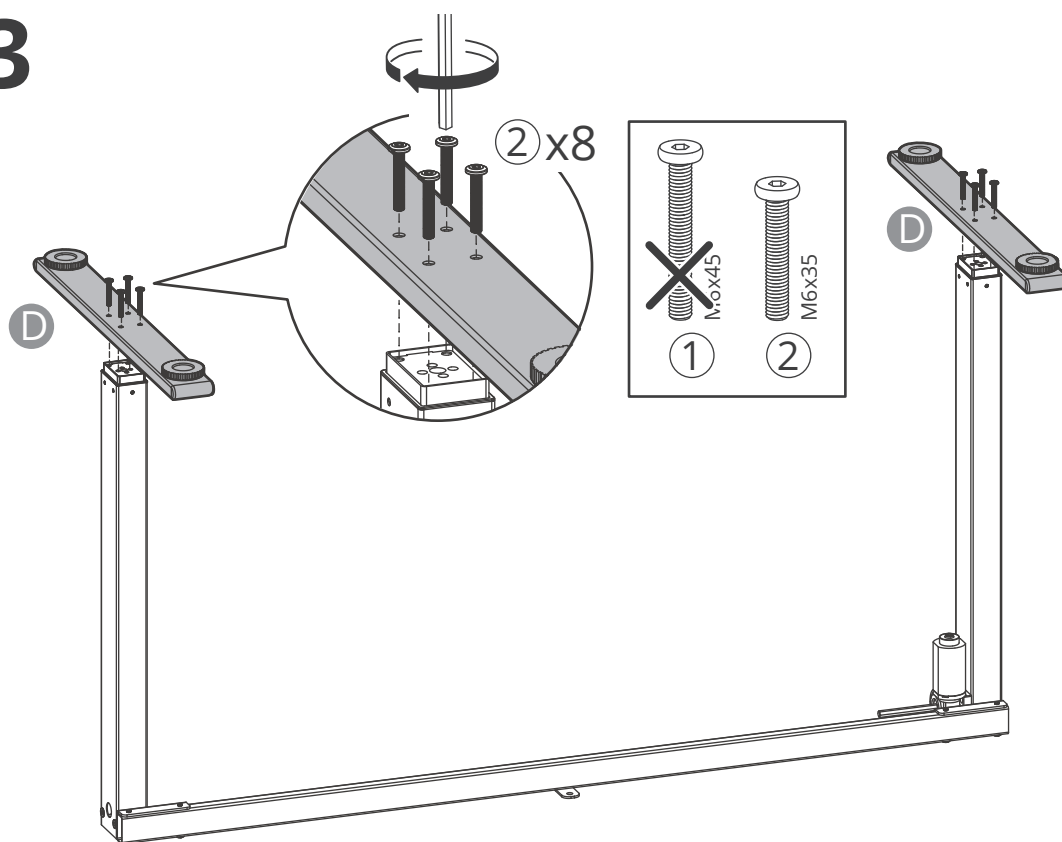
1



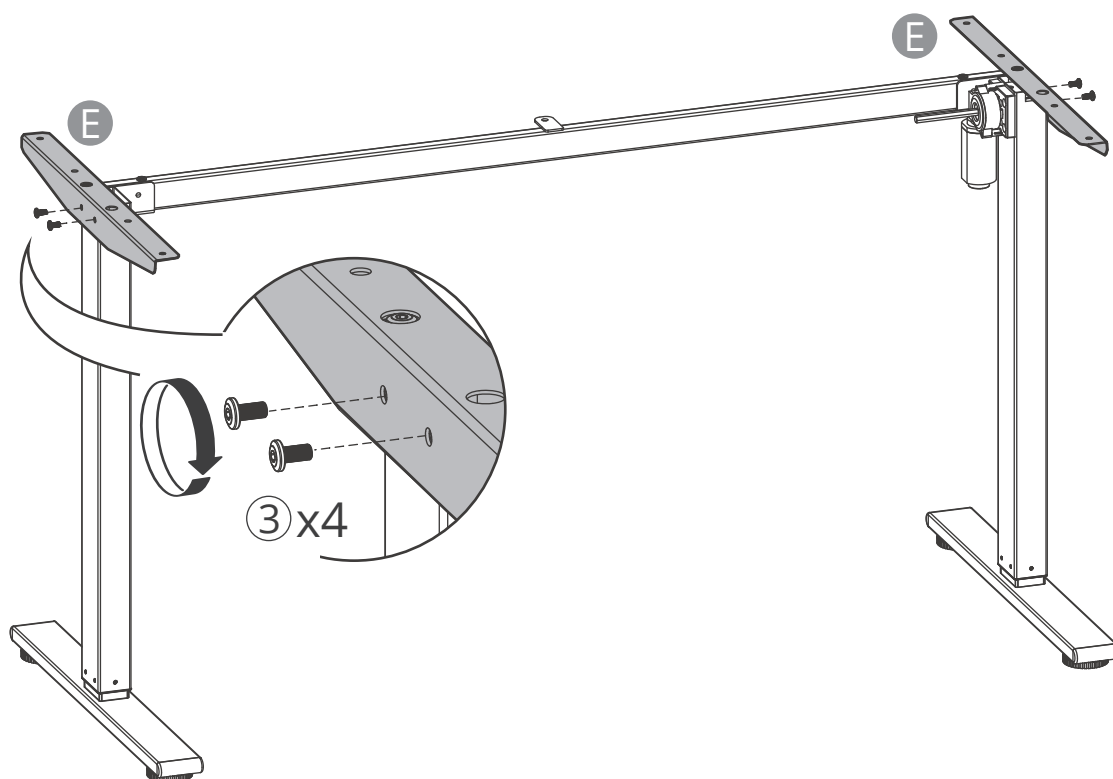
2



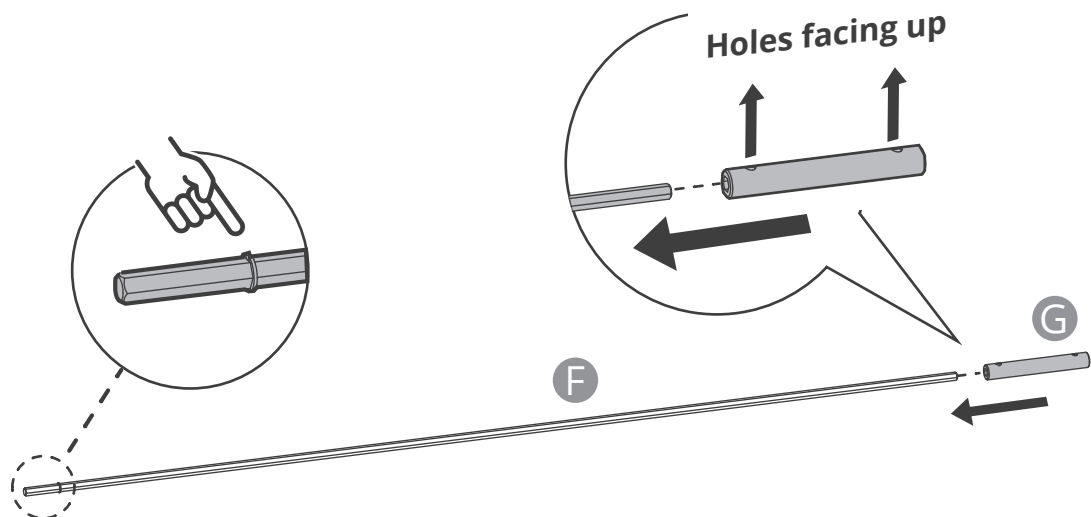
3



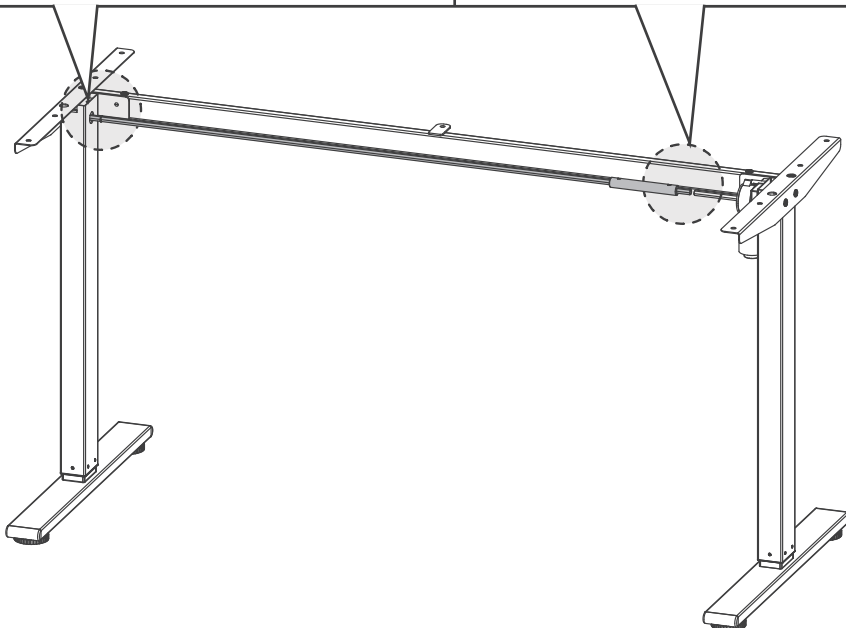
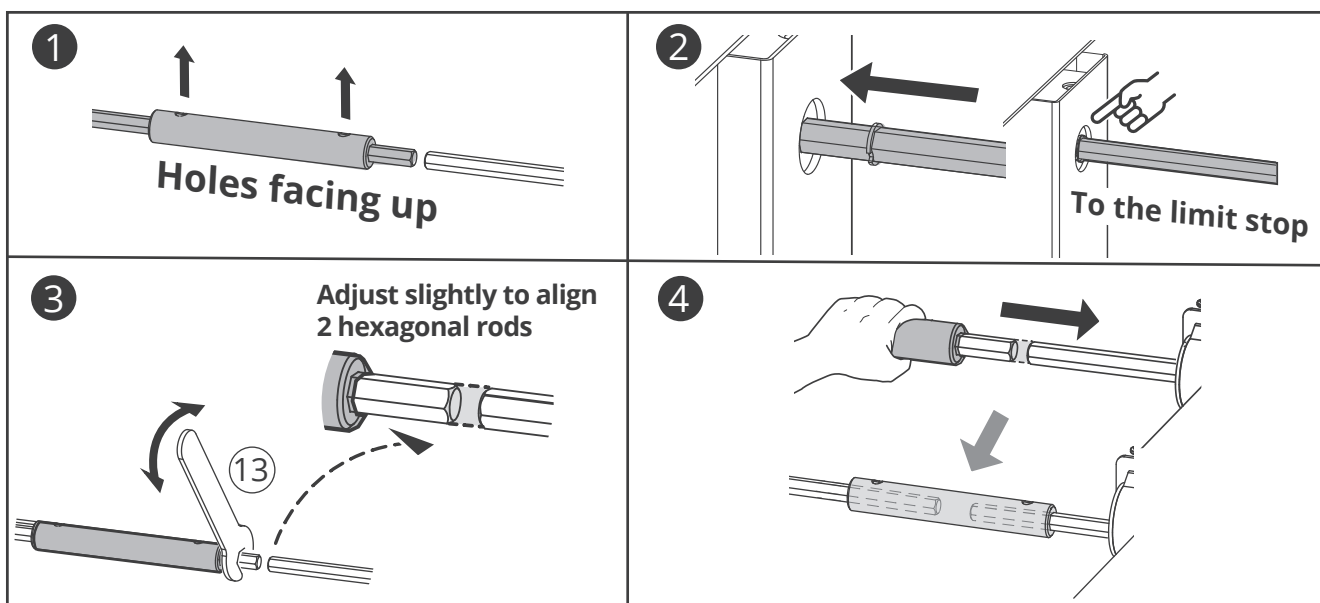
4



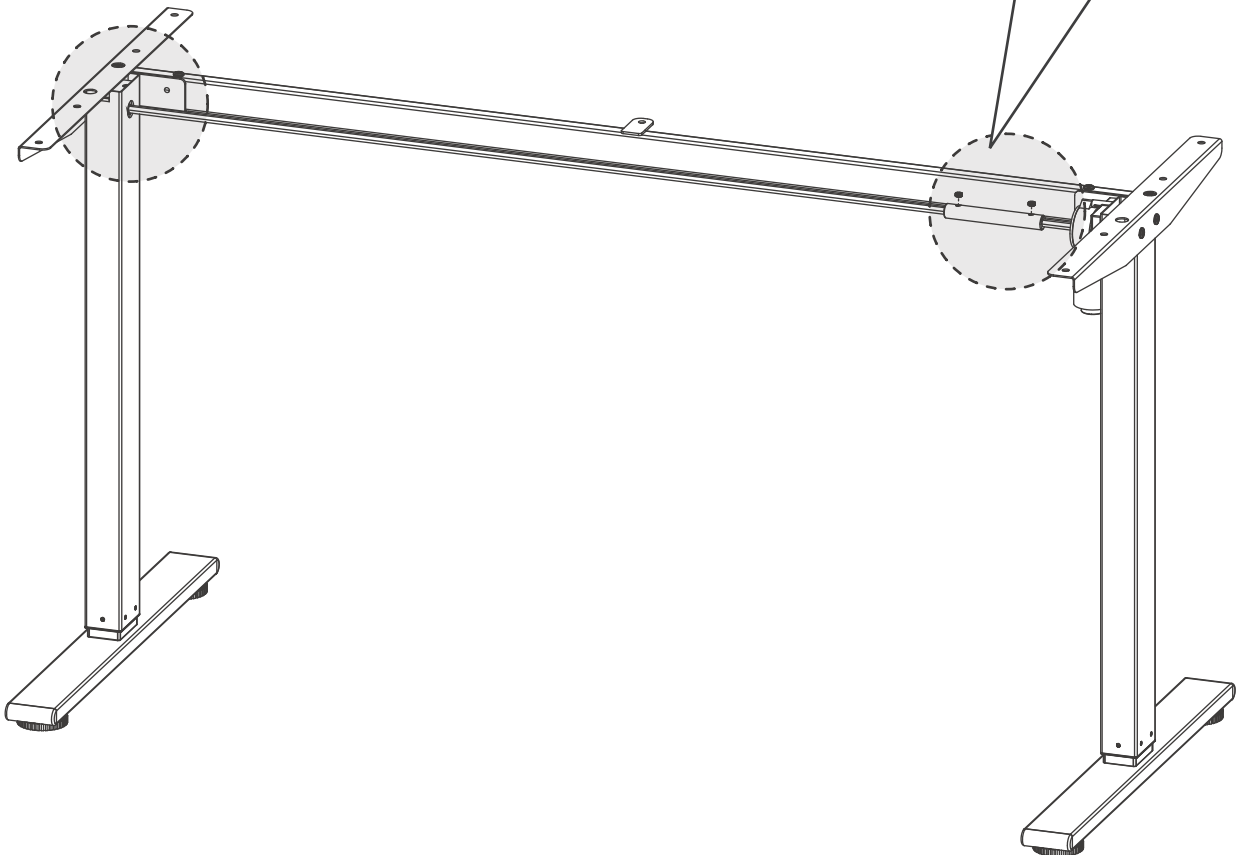
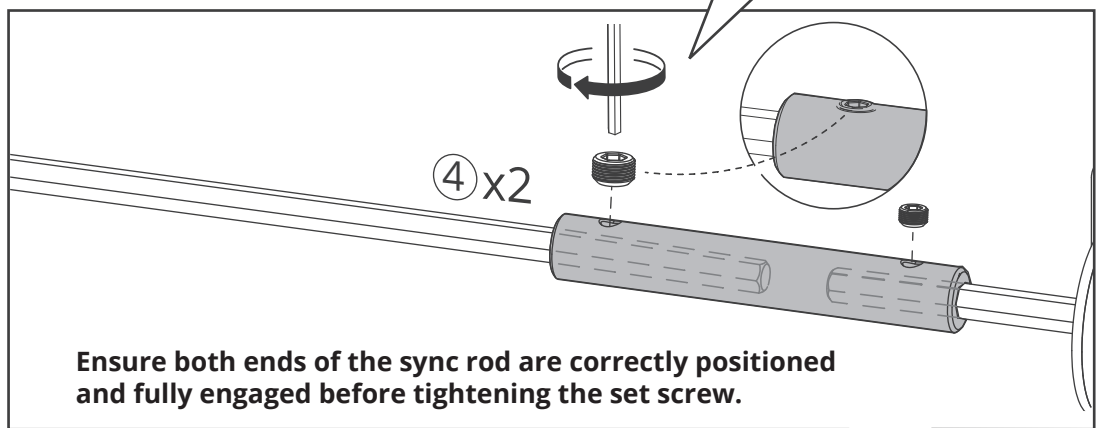
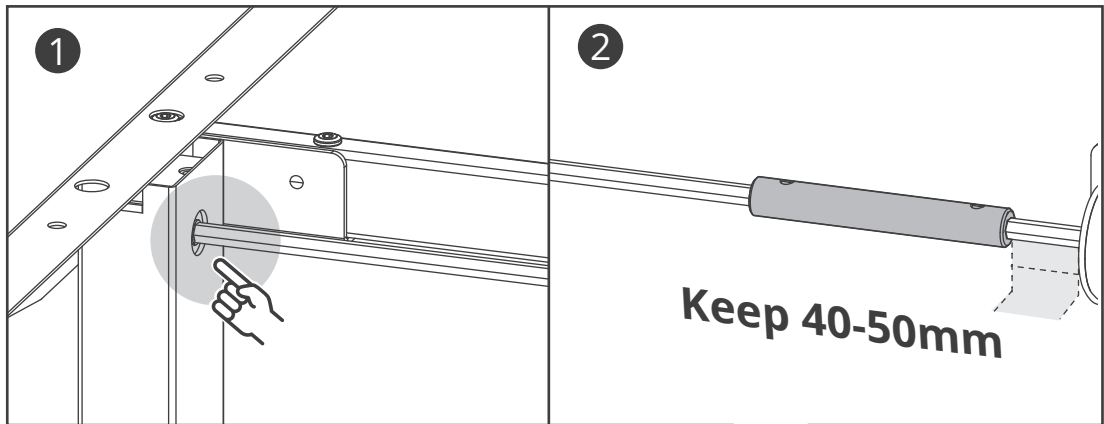
5



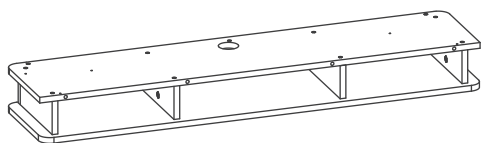
6



7

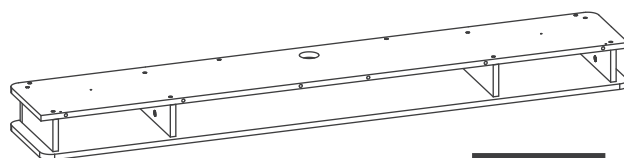


40" / 48" / 55"
(100cm/120cm/140cm)



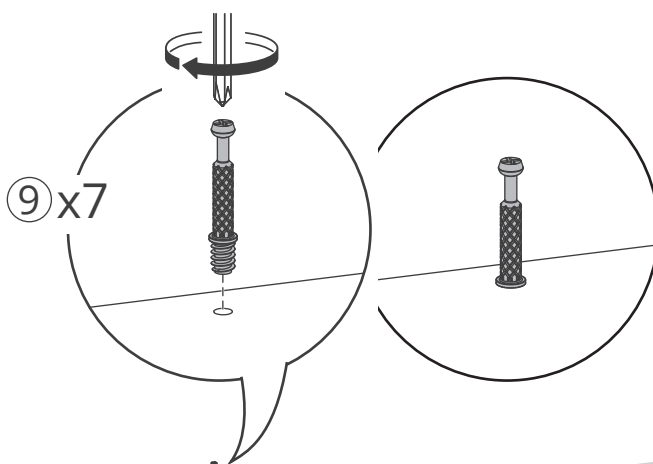
Page 8 - 11

63"
(160cm)



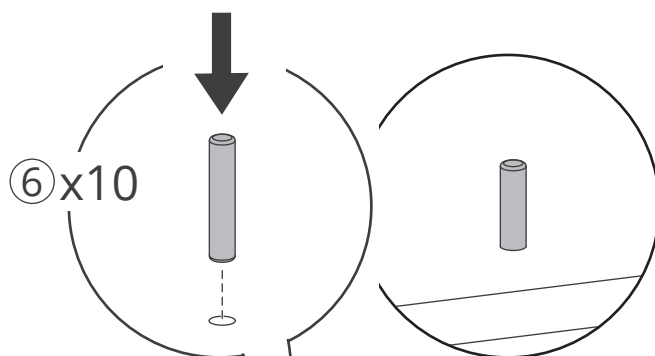
12-15

8

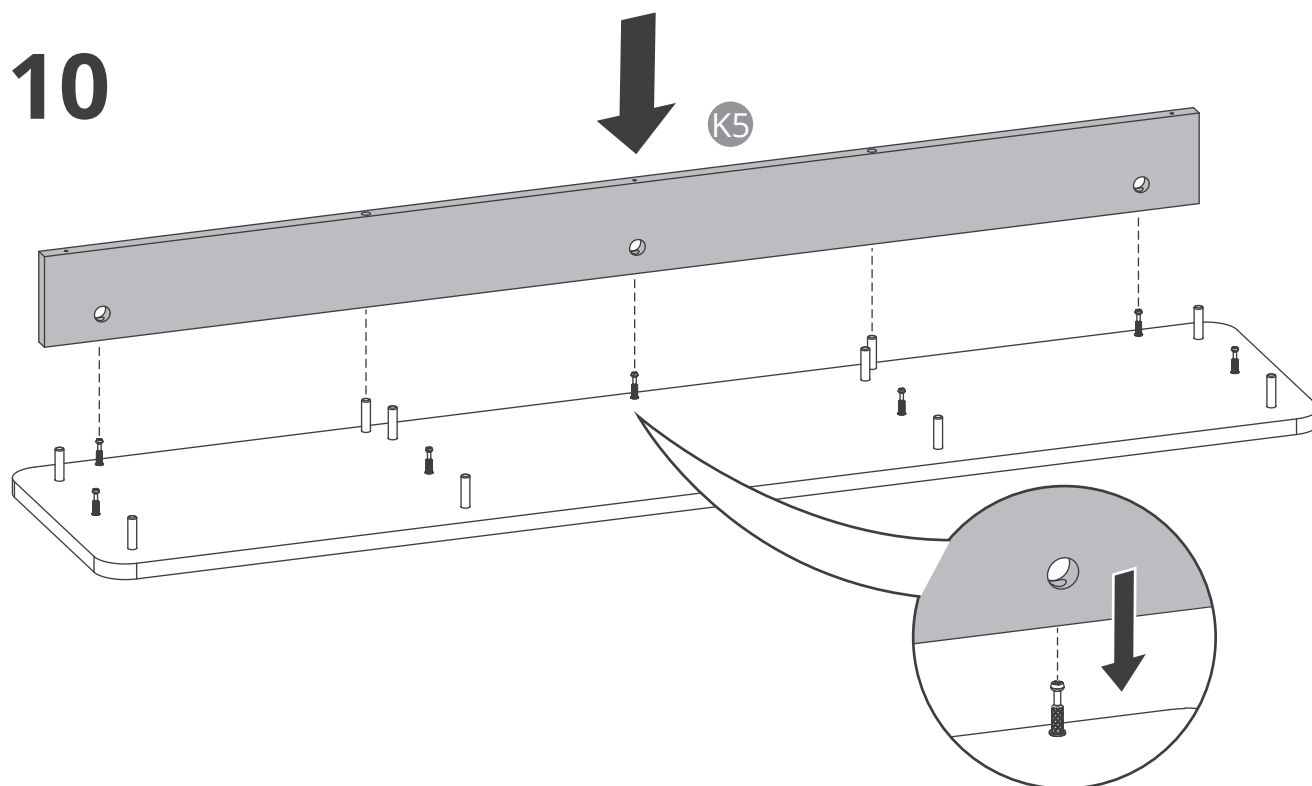


K6

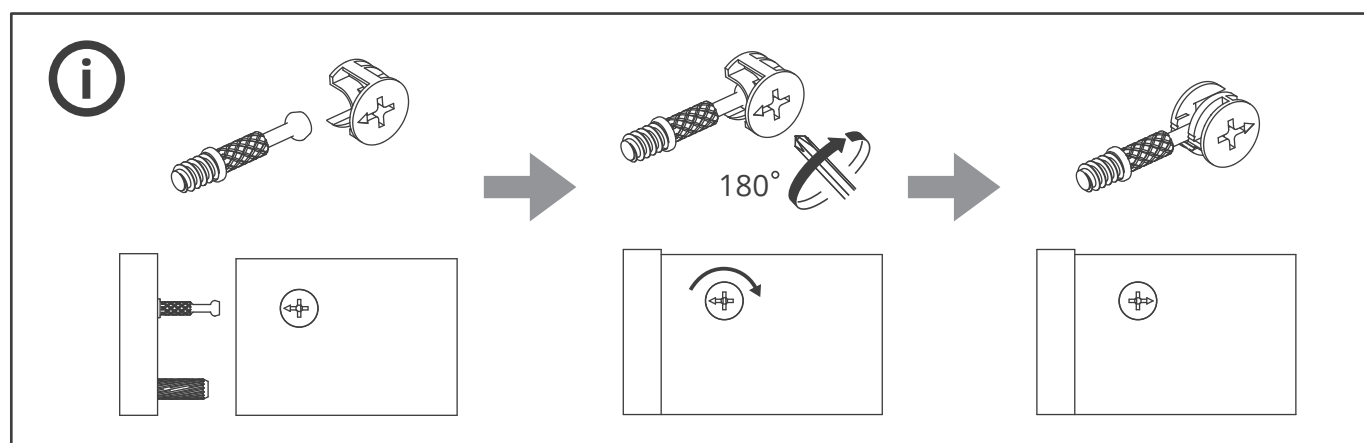
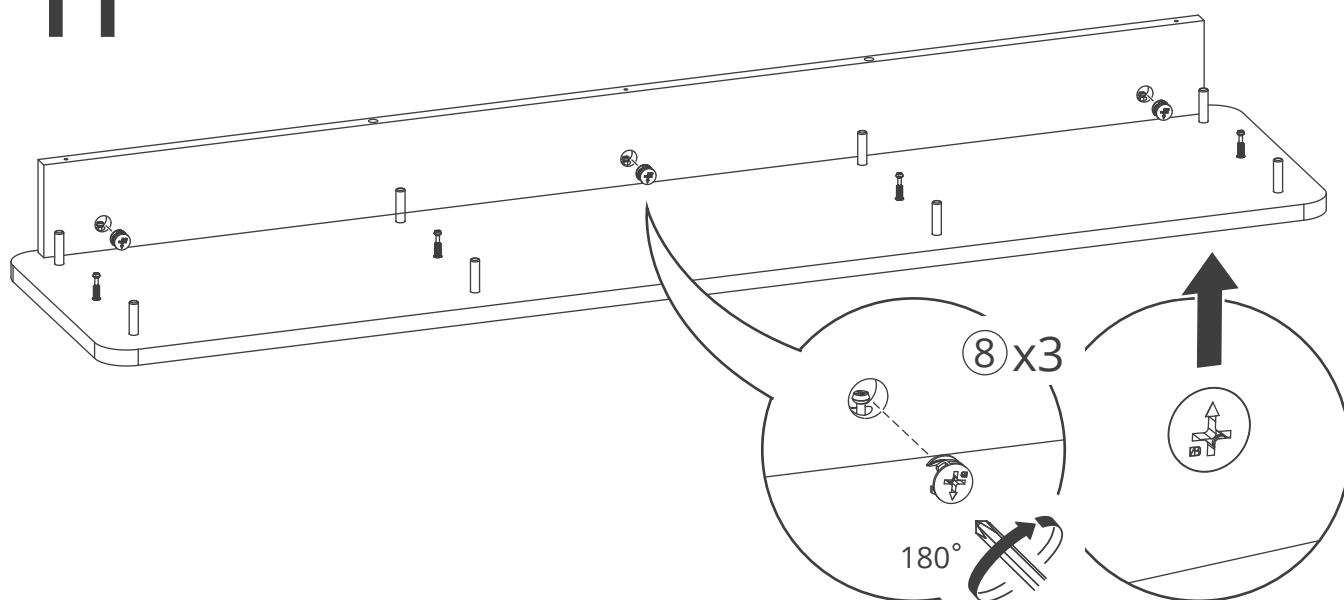
9



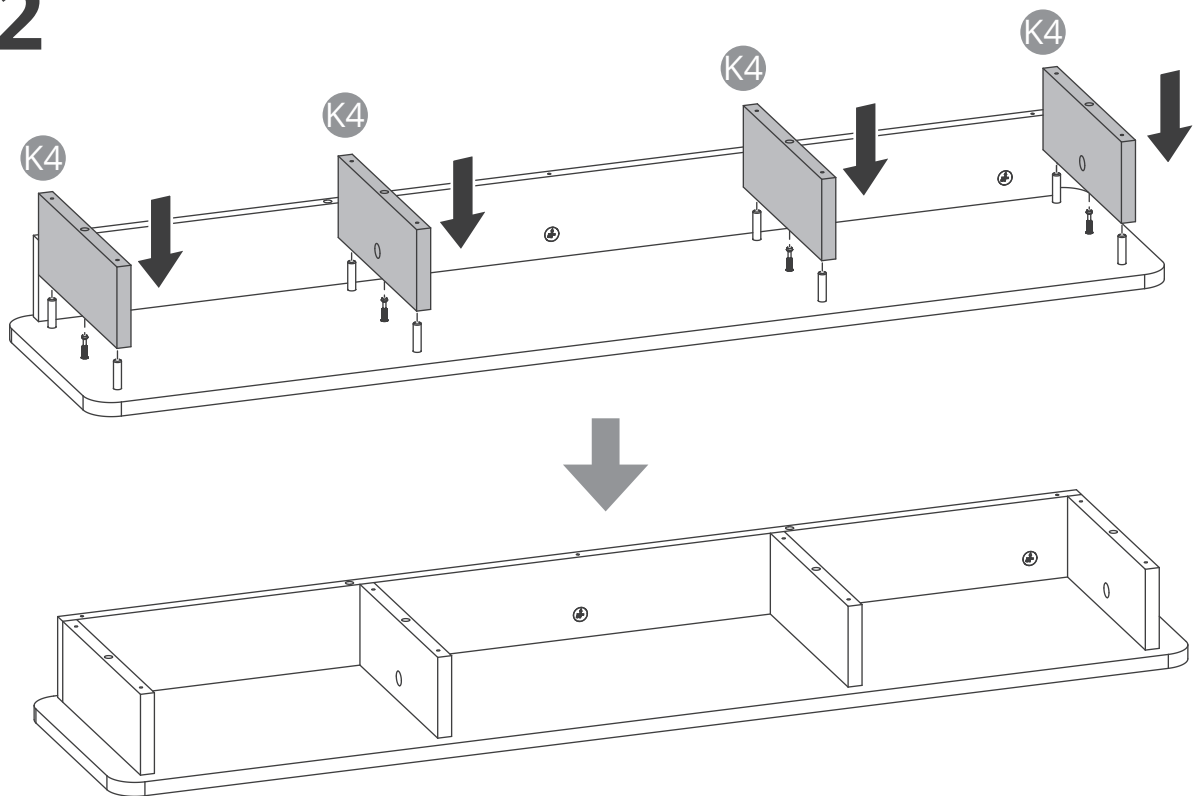
10



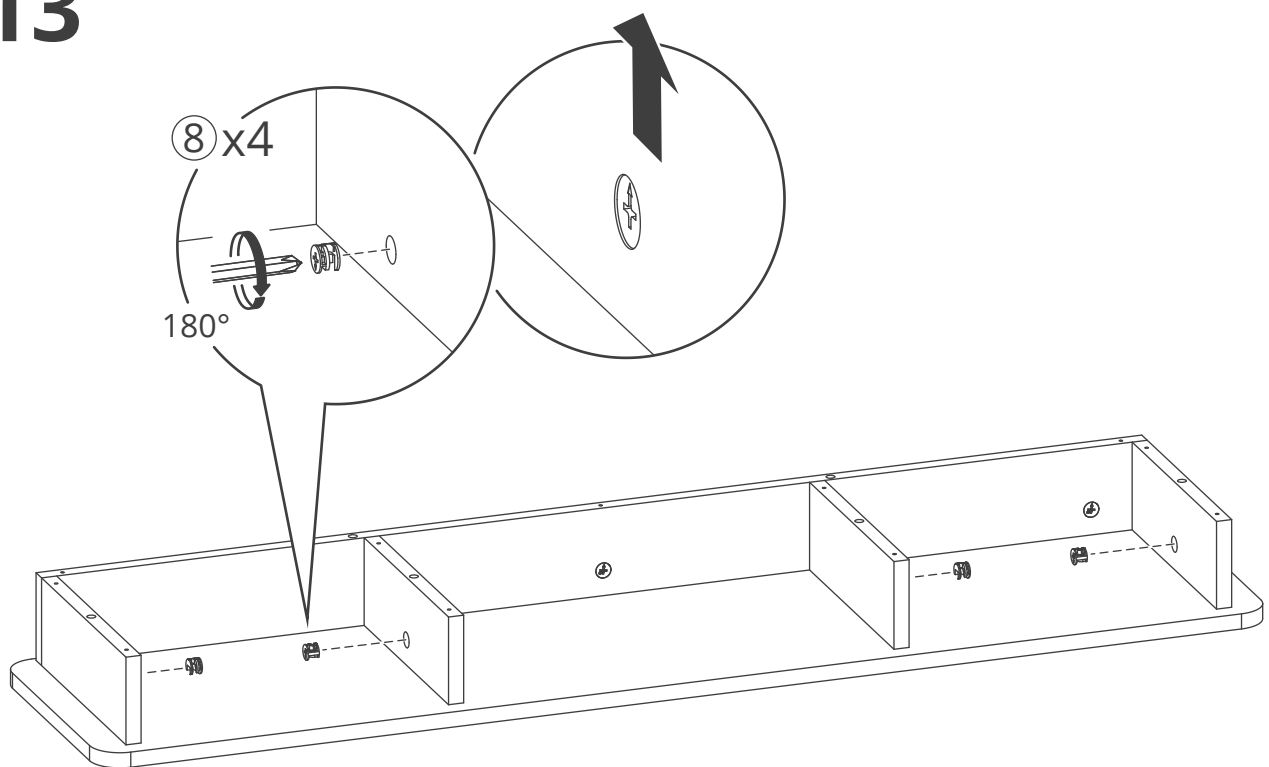
11



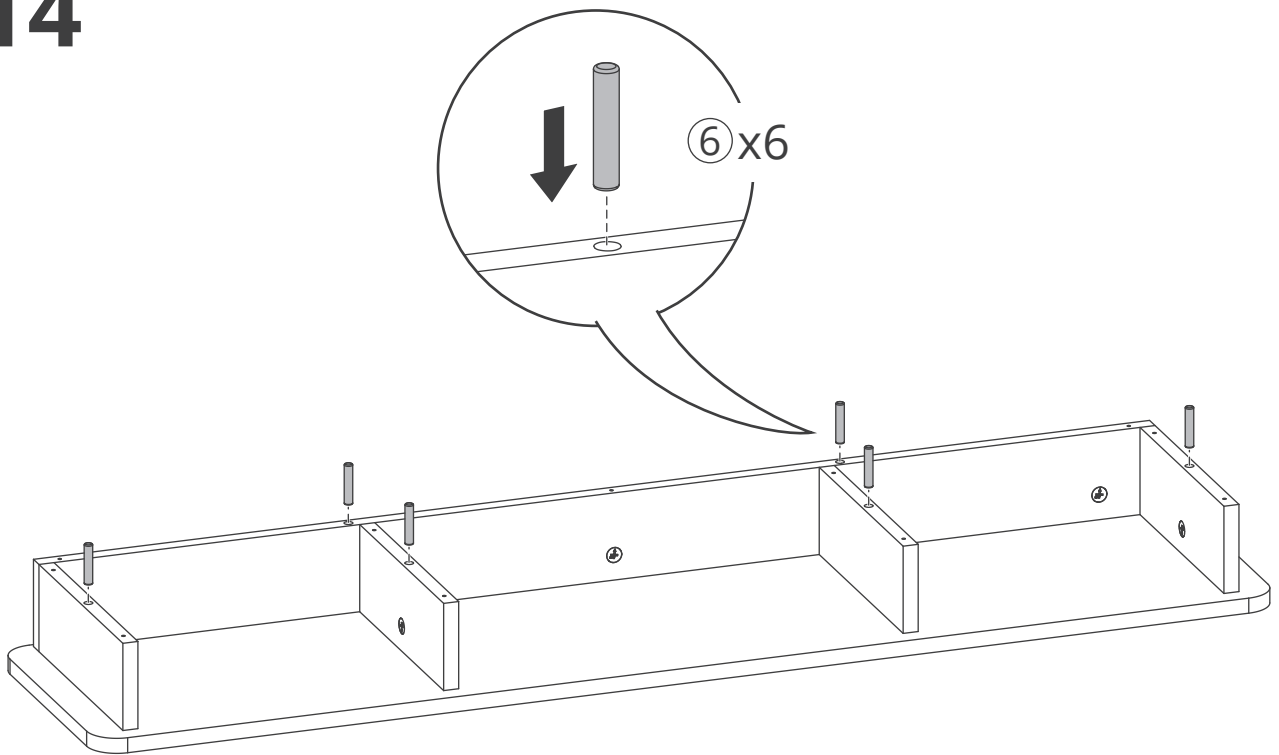
12



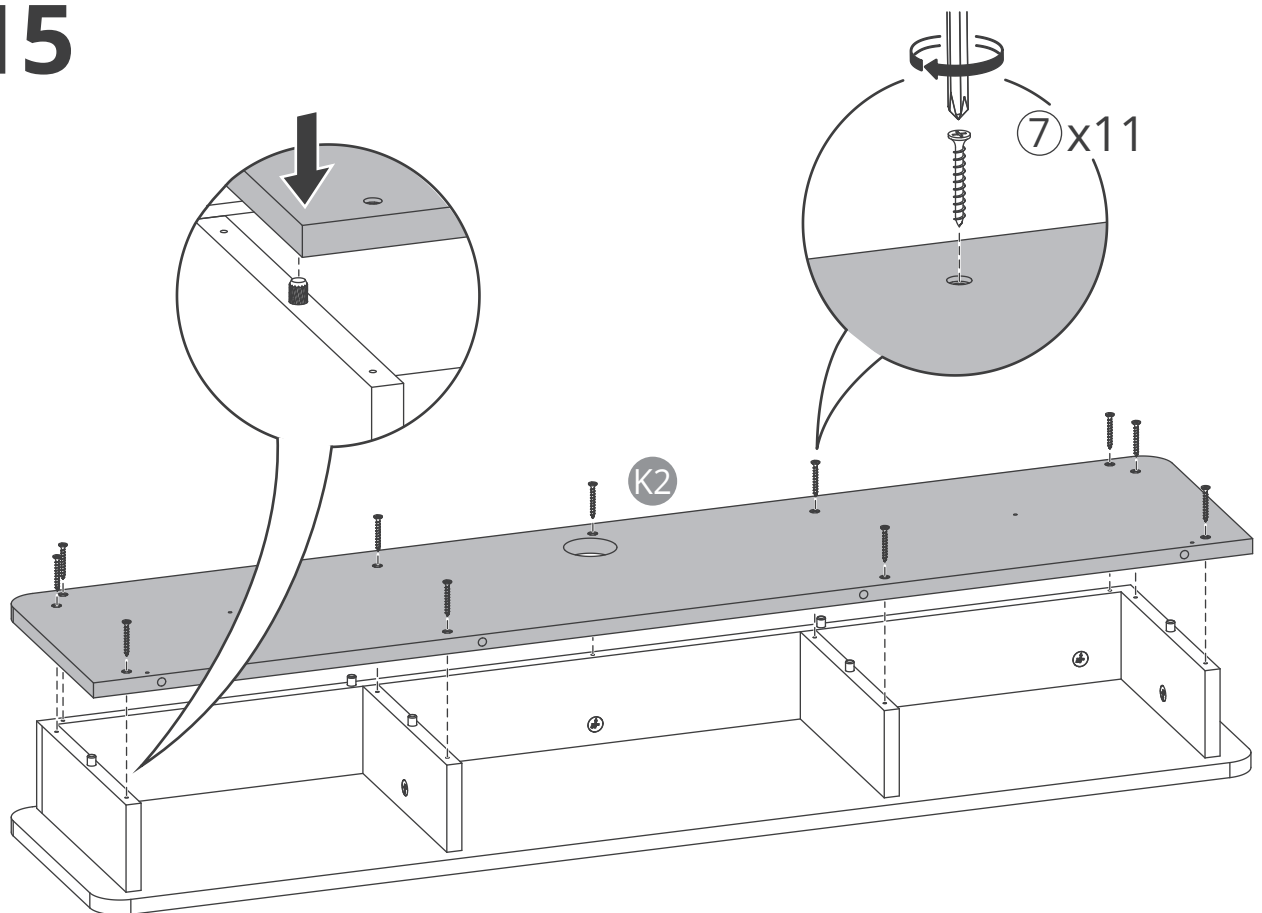
13



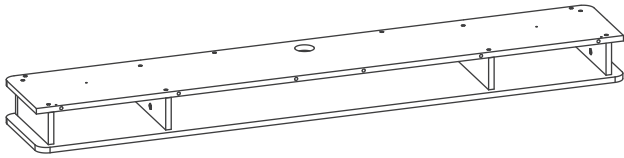
14



15



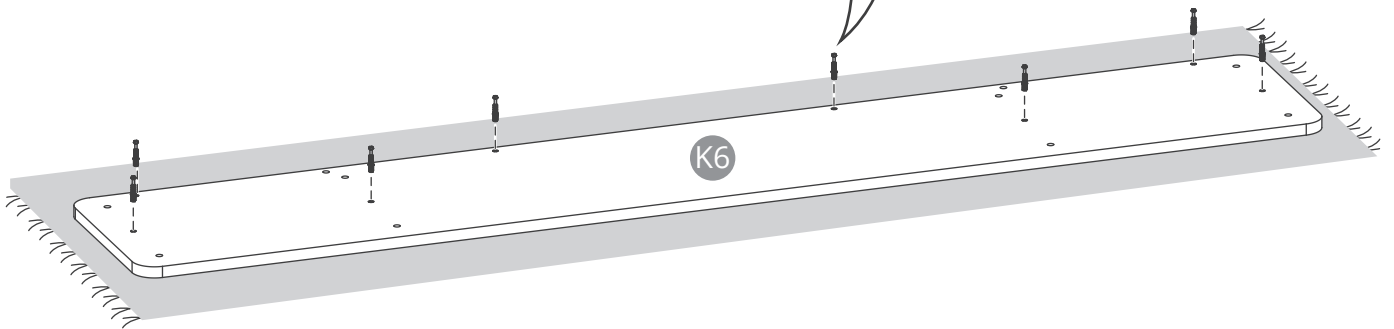
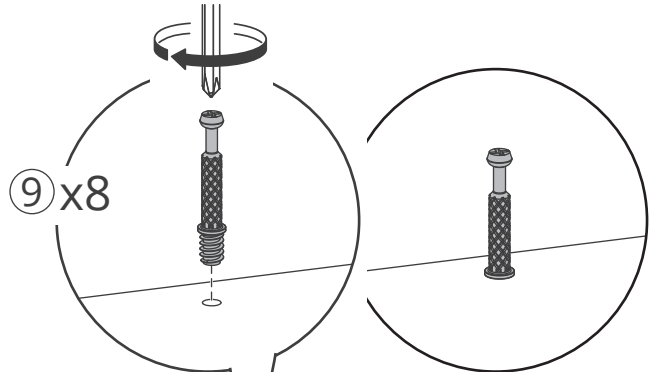
63"



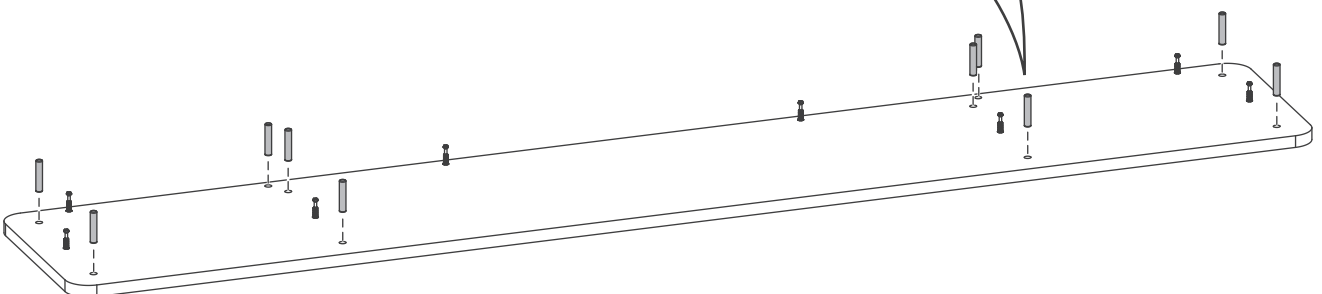
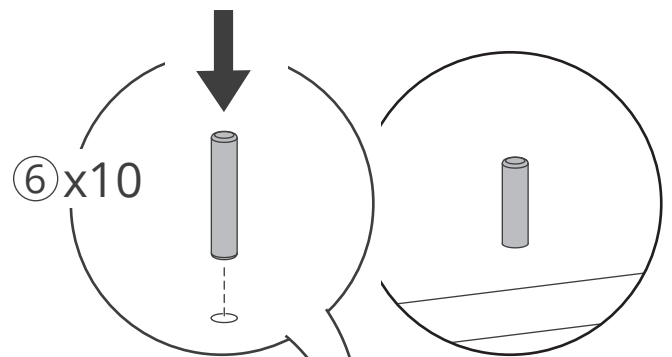
Page 12 - 15



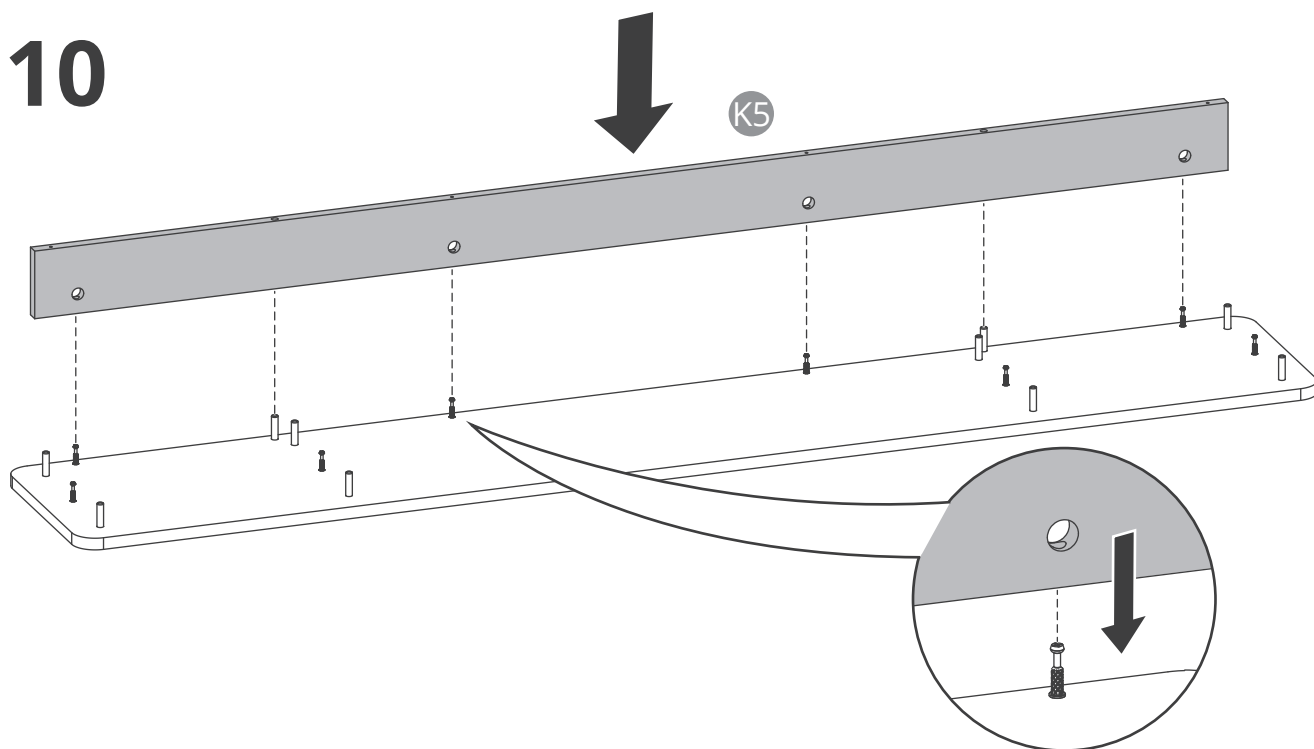
8



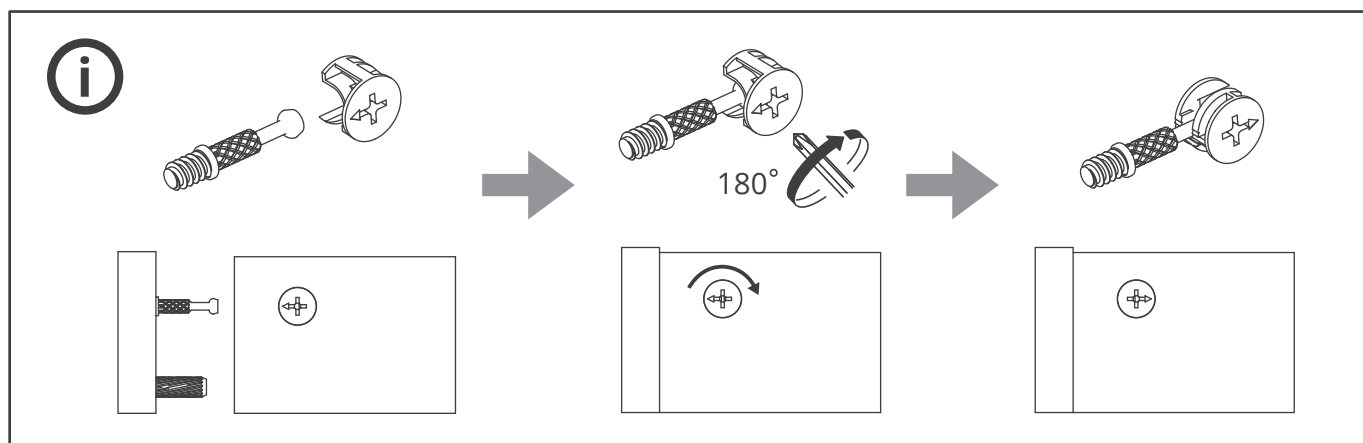
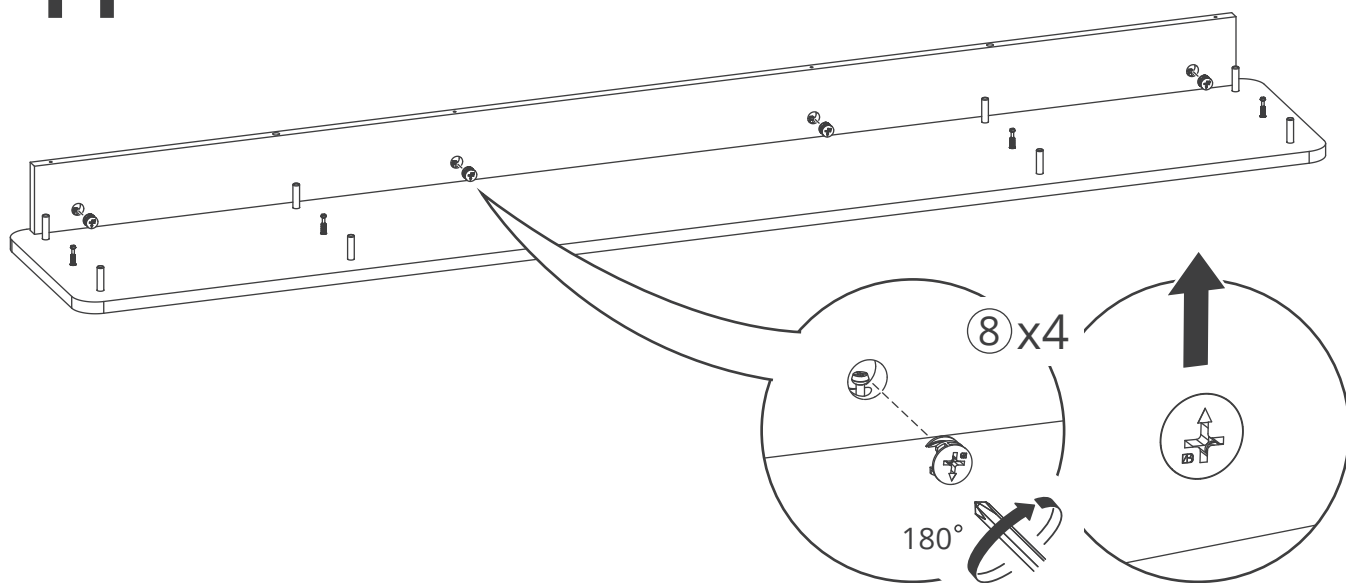
9



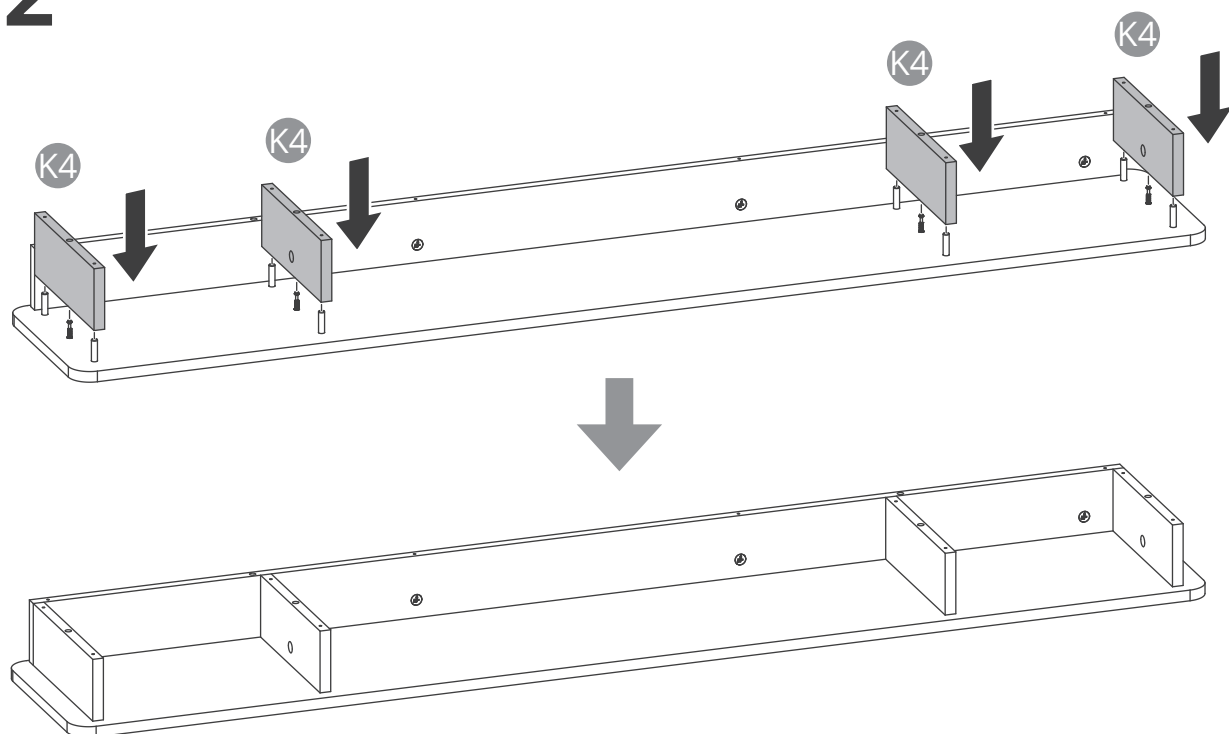
10



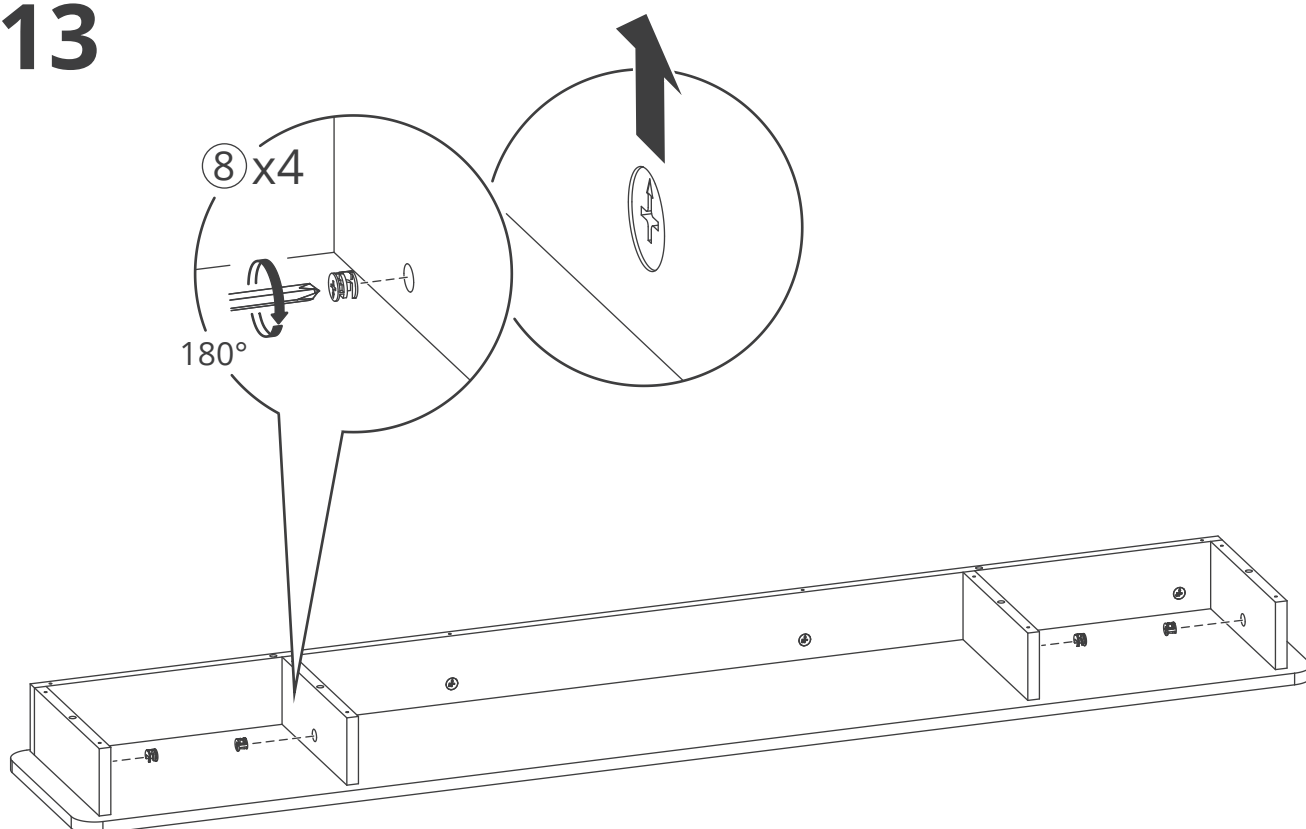
11



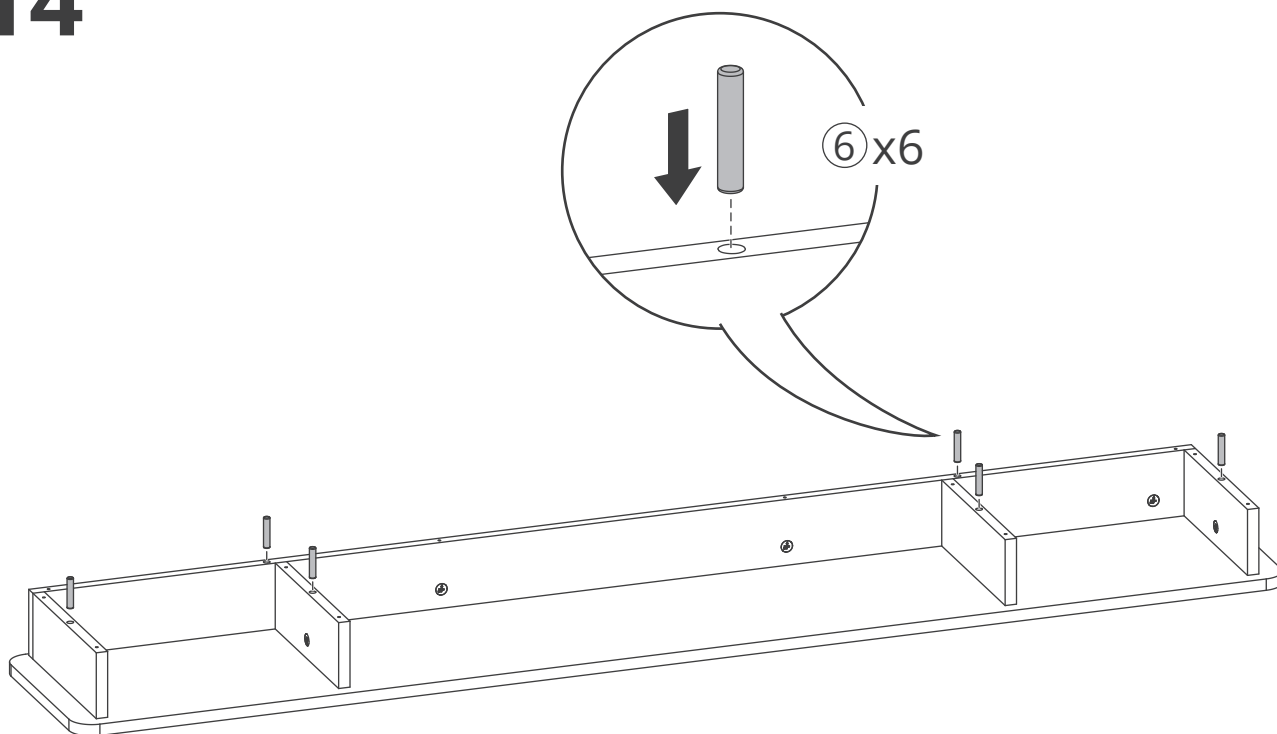
12



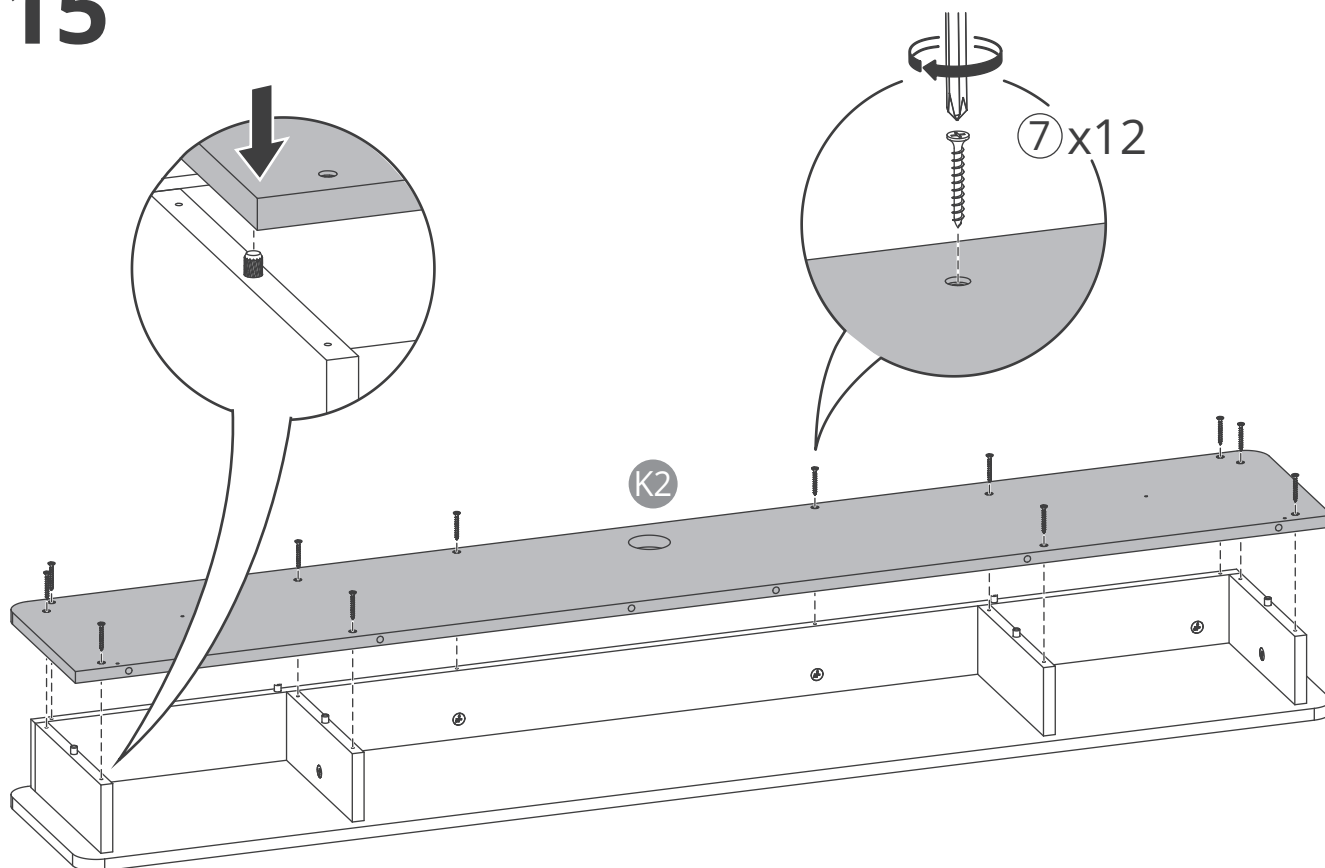
13



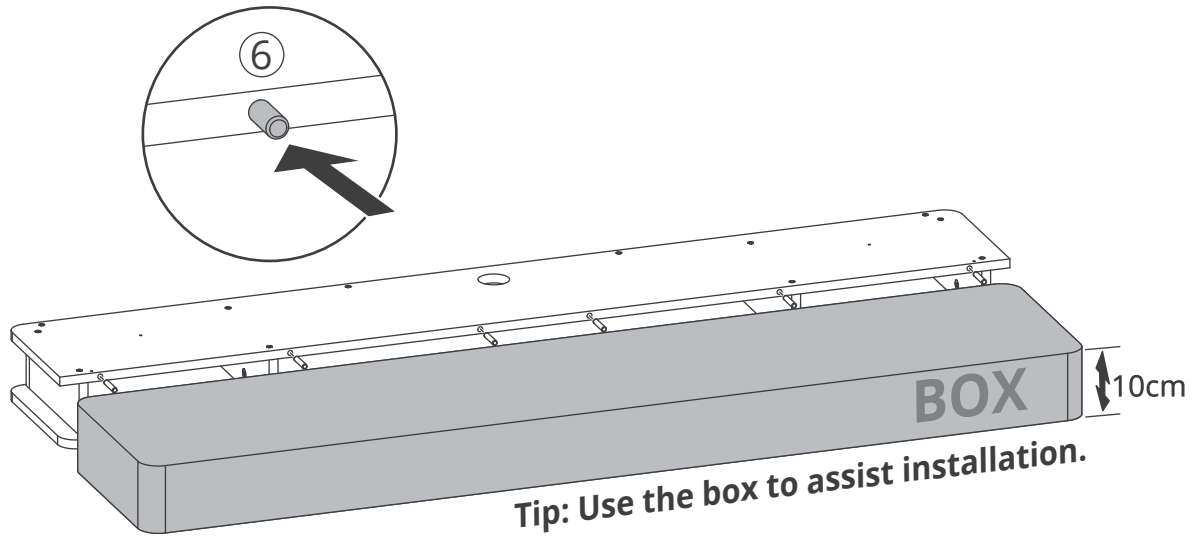
14



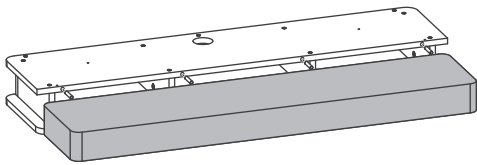
15



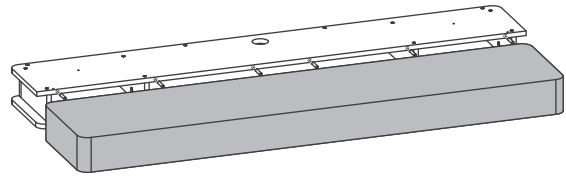
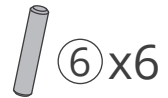
16



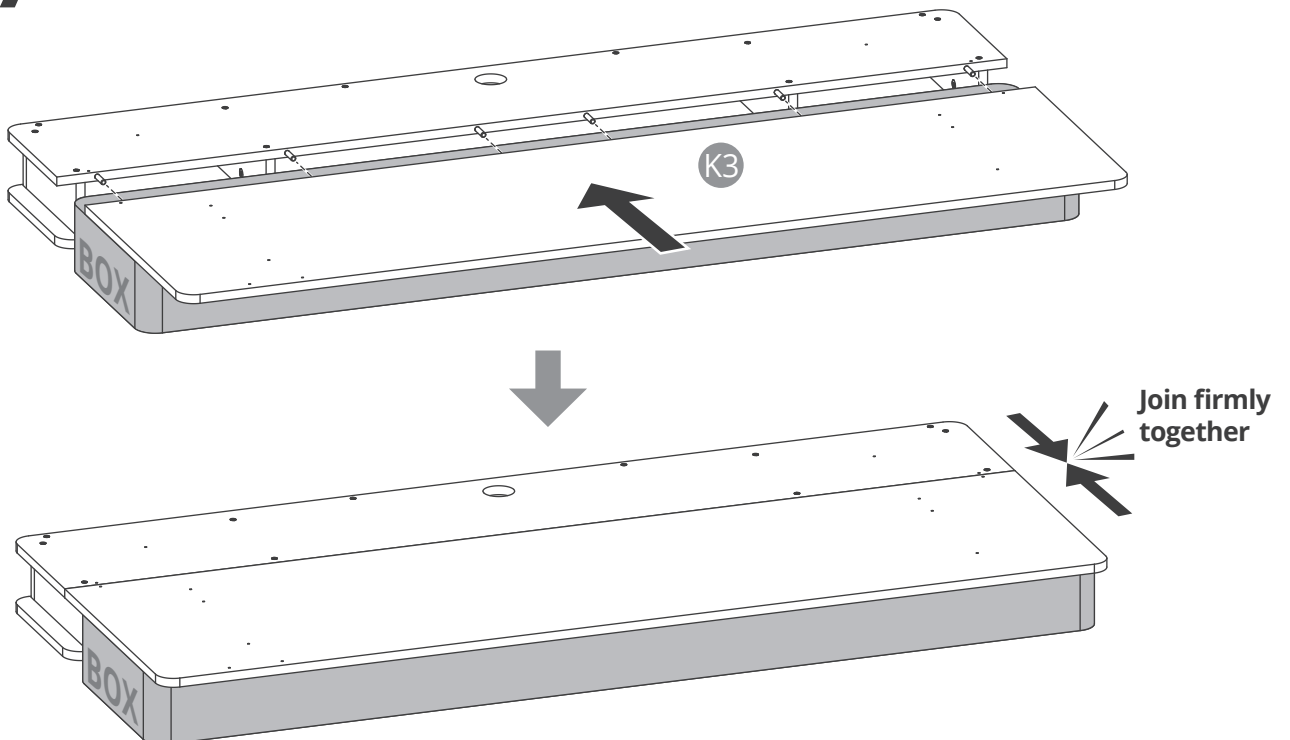
40"/48"
(100cm/120cm)



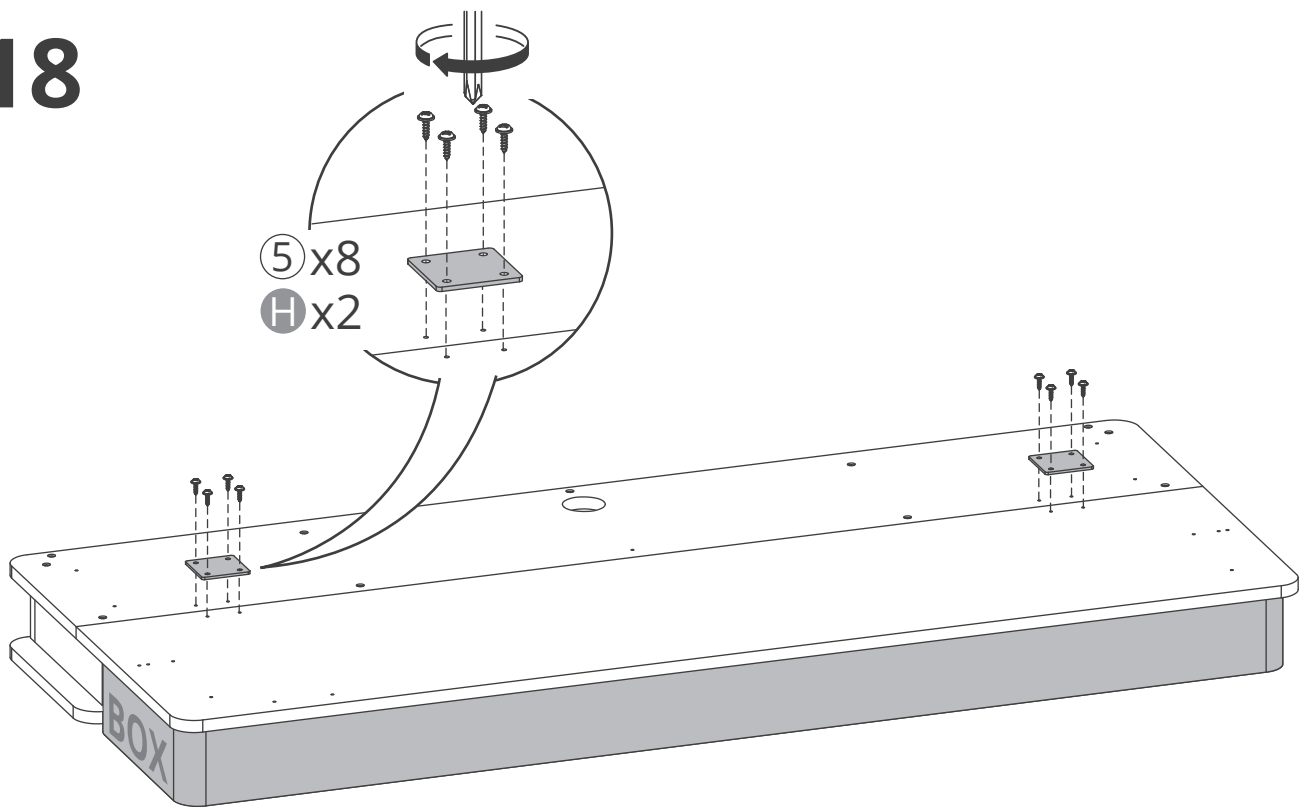
55"/63"
(140cm/160cm)



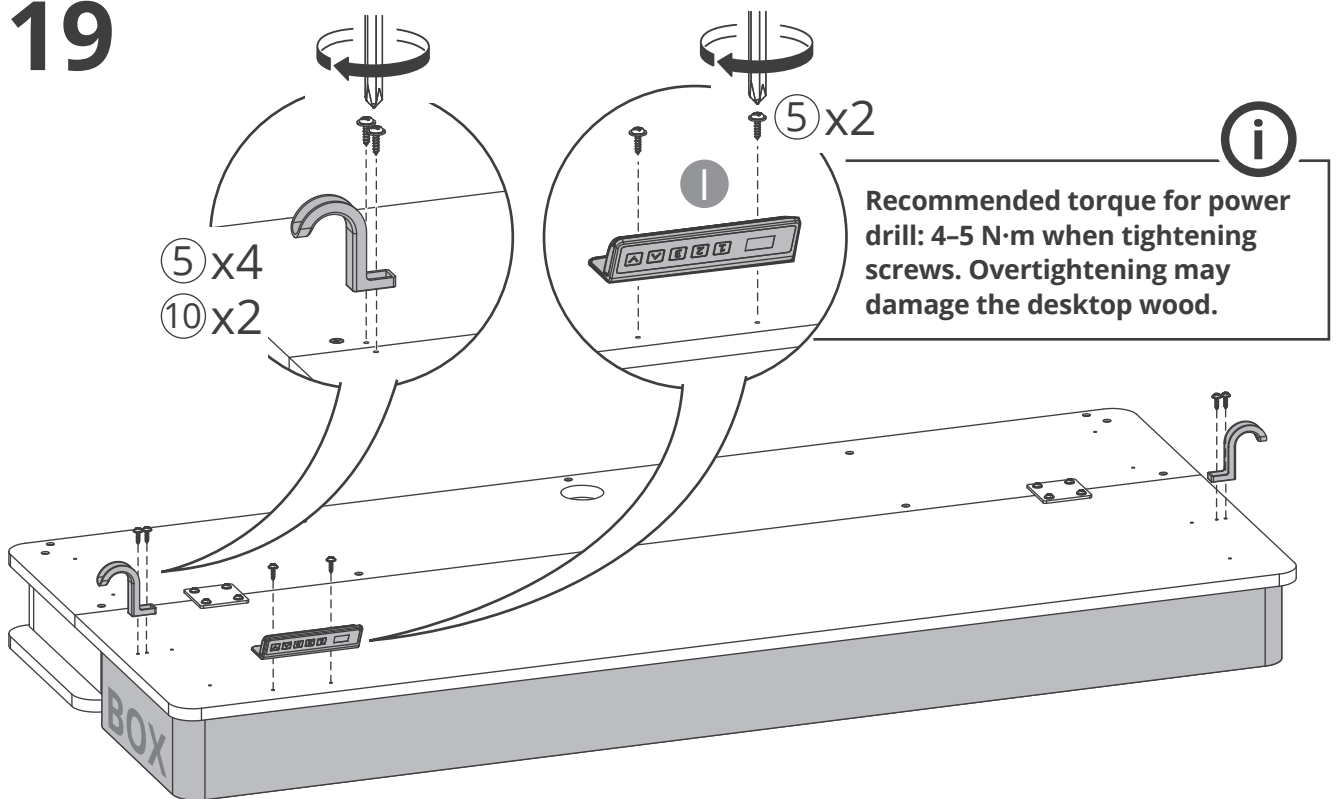
17



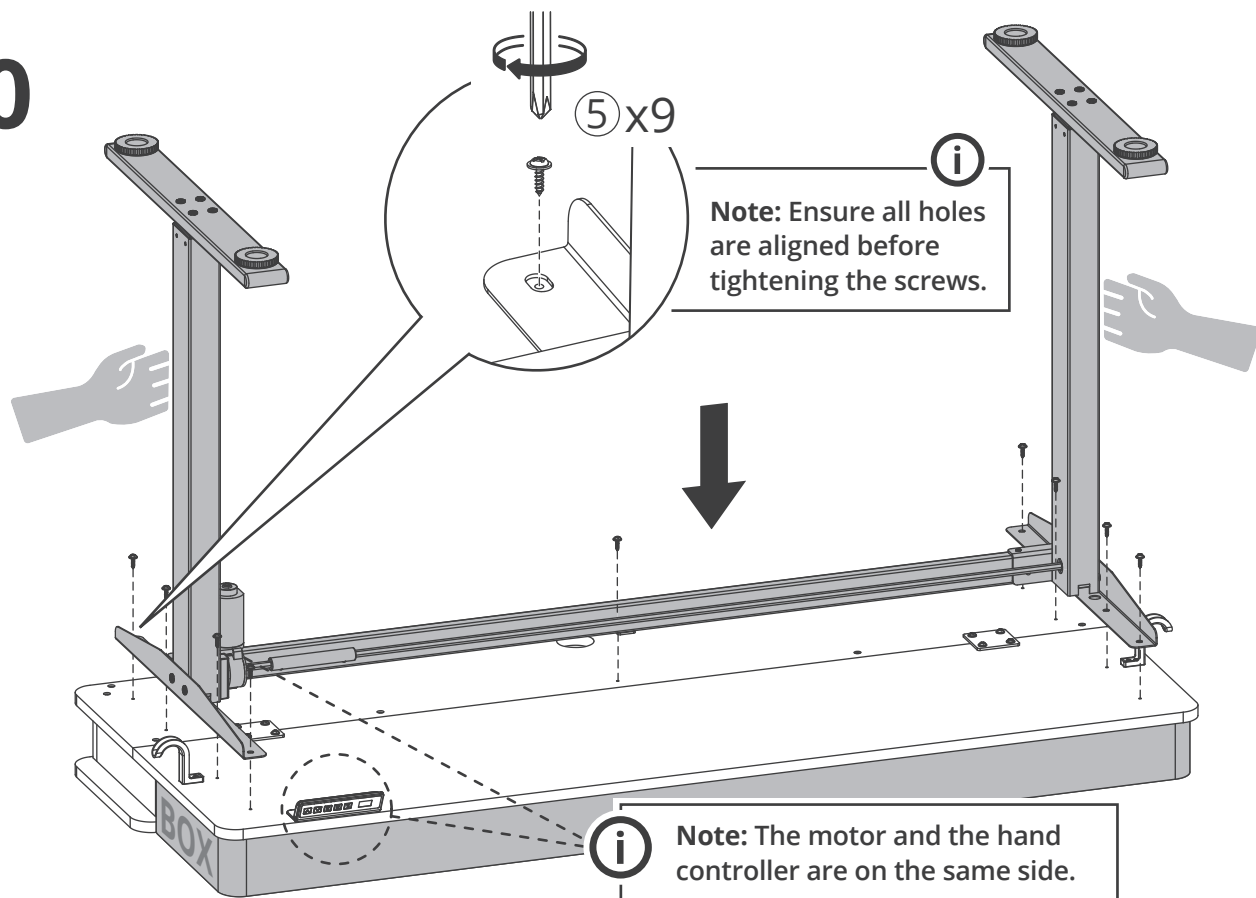
18



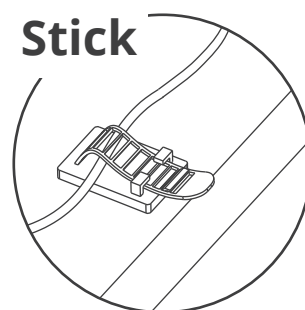
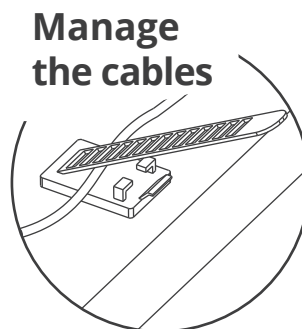
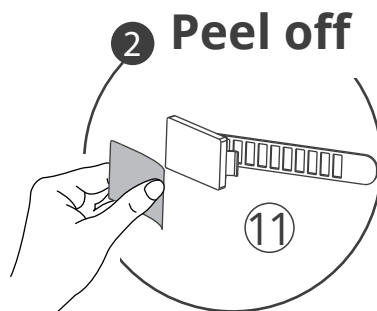
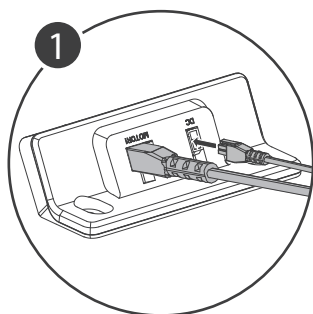
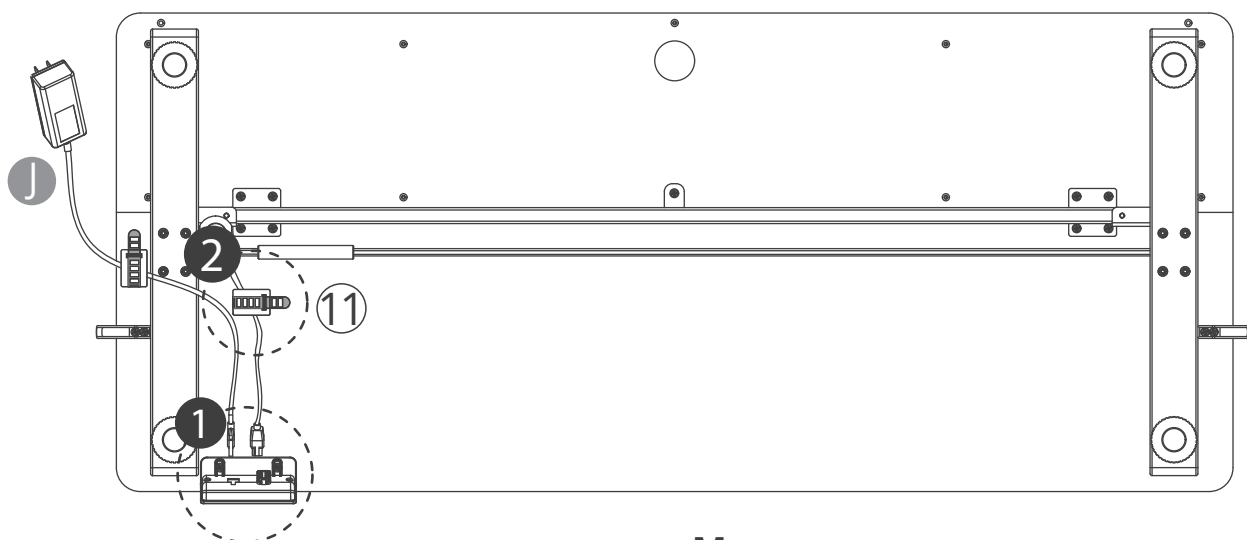
19



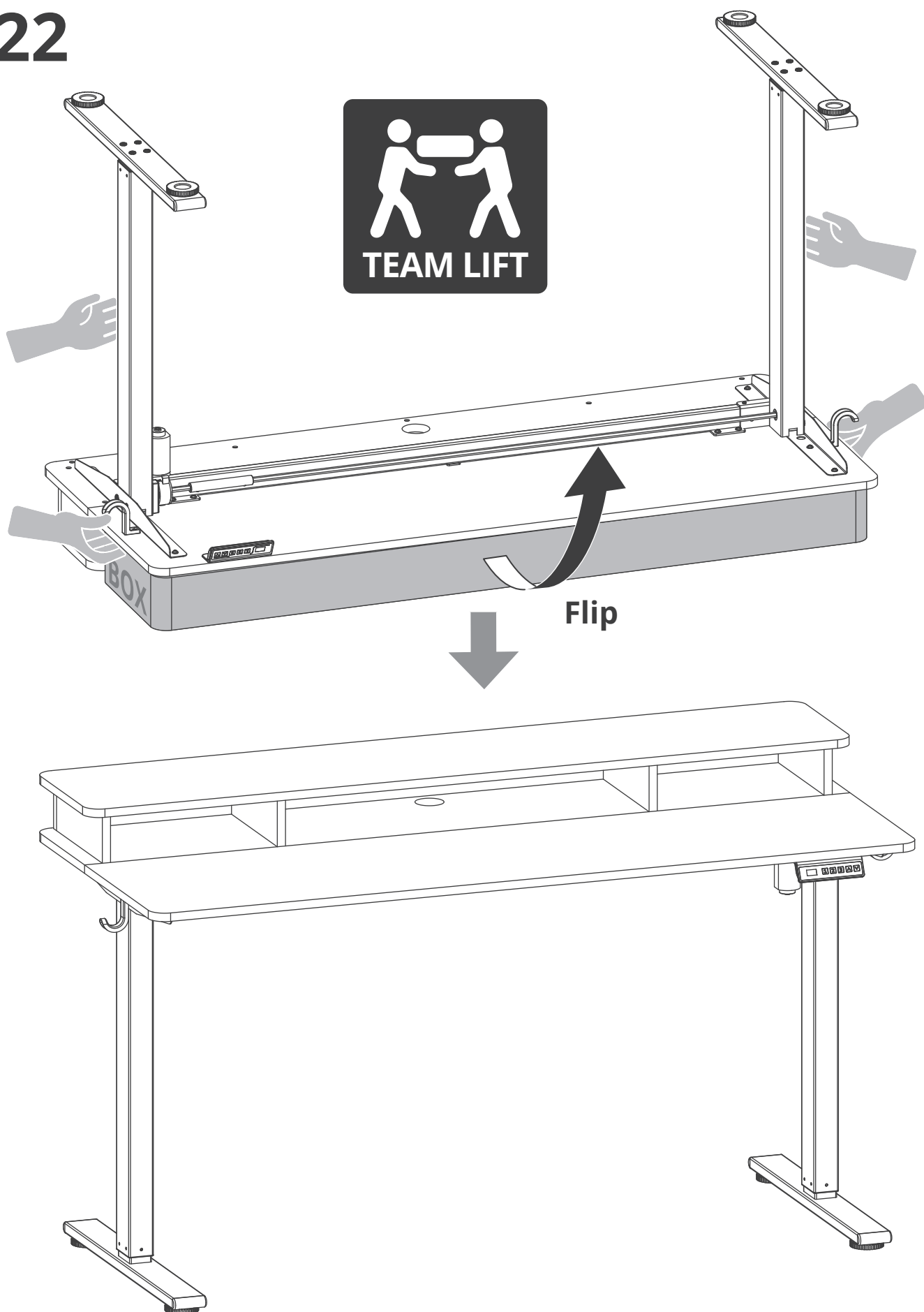
20



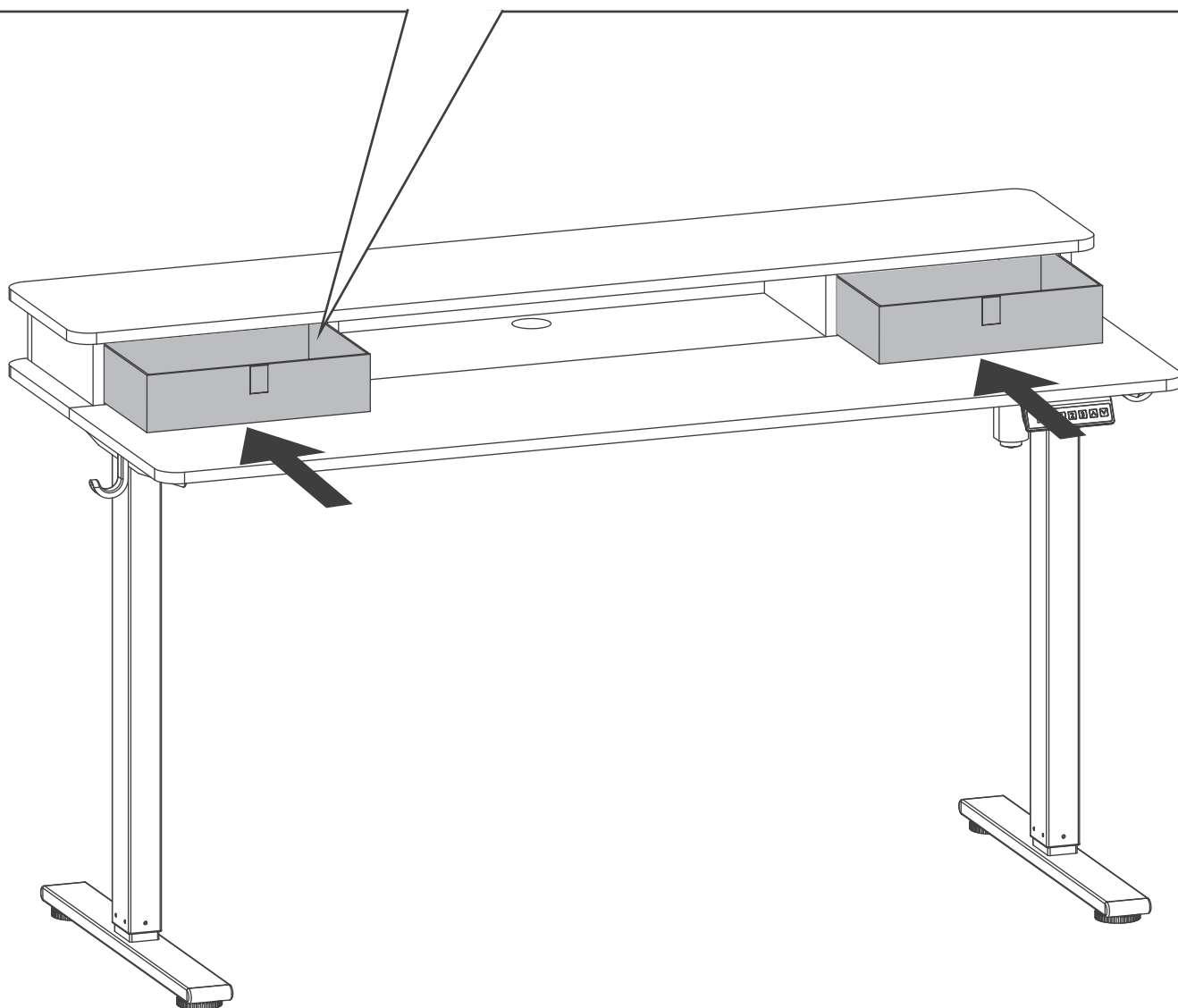
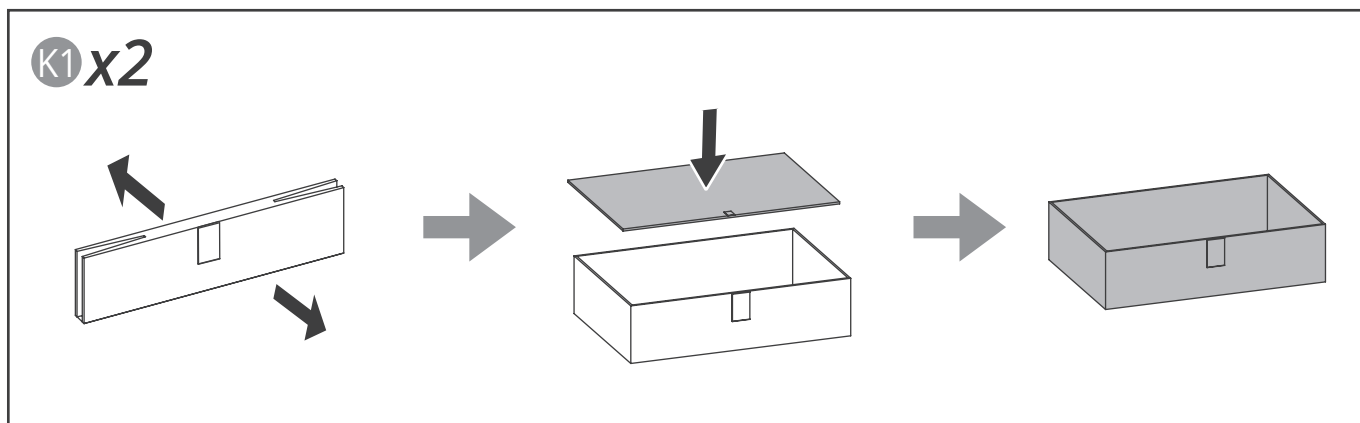
21

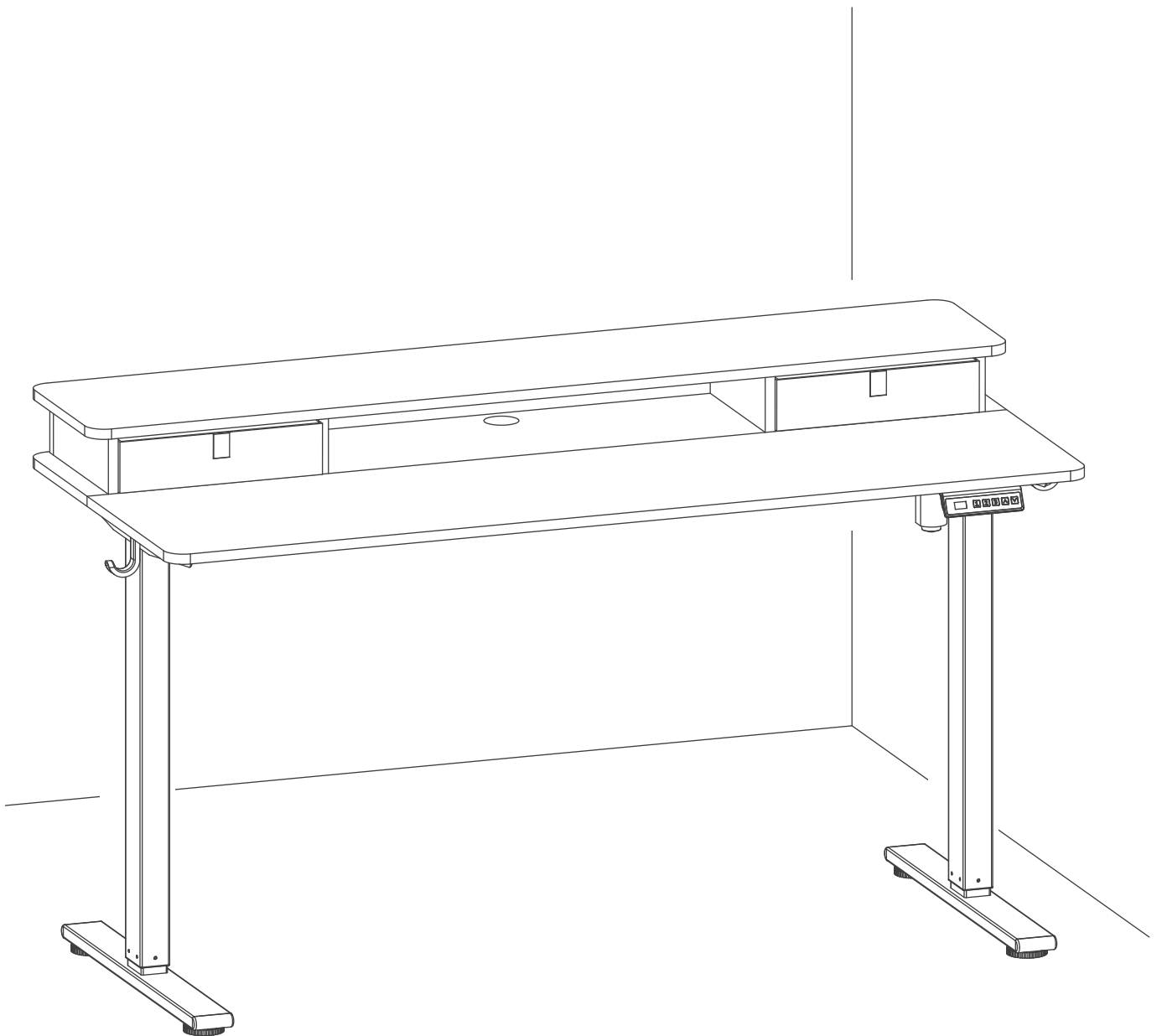


22



23





Keypad User Guide



Height Adjustment

Press and hold the or button to adjust the height.



Memory Heights

1. Recall Preset: Short press button //. Desktop moves to saved height.
2. Default Heights: : 72 cm/28.3 in; : 90 cm/35.4 in; : 118 cm/46.4 in.



Memory Height Setting

Press and hold the or key to adjust to the desired height; long press the // key for 3 seconds until the display flashes / / to store the current height memory position.



Child Lock

Lock: Press + 5 s, display .

Unlock: Press + 5 s, display returns to height.



Reset

If the system malfunctions or the display shows , you need to reset the standing desk.

1. Press and hold the button for 3 seconds.
2. The handset display will show , indicating the desk has entered reset mode.
3. Continue to hold down the button until the desk lowers to its lowest point and then rebounds slightly (2 cm).
4. The display will return to showing the height value. Release the button to complete the reset.

Frequently Asked Questions (FAQ)

One-Sided Desk Lifting

Possible Cause

The sync rod is not installed correctly.

Solution

Check if the sync rod is fully inserted into the leg column. If not, lower the desk to its lowest position and reinstall the sync rod referring to the leg installation sticker or the instruction manual.

If the above steps do not solve the problem, please take a video of the issue and contact after-sales support at support@yfs.life.

Handset Malfunction or No Response	<p>Possible Causes</p> <ol style="list-style-type: none"> 1. Power is not connected correctly. 2. Controller has poor contact or is malfunctioning. 3. Fuse is blown or the power module is faulty. <p>Solution</p> <p>Disconnect all cable connections and reconnect them. Check if all cables are connected correctly and tightly. Make sure the power plug is inserted into the power outlet.</p> <p>If the above steps do not solve the problem, please take a video of the issue and contact after-sales support at support@yfs.life.</p>
Desk Tilting or Unbalanced	<p>Possible Causes</p> <ol style="list-style-type: none"> 1. Improper installation causing imbalance. 2. One column or footpad is not level. <p>Solution</p> <ol style="list-style-type: none"> 1. Review the installation steps to ensure each column is correctly installed and the desk is level. 2. Adjust the footpad height to level the desk. 3. If unresolved, record a video of the issue and contact customer support at support@yfs.life.
Unusual Noise or Irregular Movement During Height Adjustment	<p>Possible Causes</p> <ol style="list-style-type: none"> 1. The desktop load exceeds the recommended limit (not more than 50kg / 110lbs). 2. Loose connections in the desk—especially near the sync rod. 3. The motor may be faulty. <p>Solution</p> <ol style="list-style-type: none"> 1. Check if the items on the desktop exceed the weight limit and reduce the load if necessary. 2. Inspect and tighten all screws and connectors to secure the desk structure. 3. If the issue persists after these steps, record a video of the problem and contact customer support at support@yfs.life.
Handset displays "rSt"/"Er1"	<p>Possible Cause</p> <p>Poor connection of motor cables, causing height deviation between legs.</p> <p>Solution</p> <p>Verify that all cable connections are correct and secure, and then perform a reset. If the problem persists, please take a video of the issue and contact after-sales support at support@yfs.life</p>
Handset displays "Hot"	<p>Possible Cause</p> <p>The desk has entered overheat protection mode.</p> <p>Solution</p> <p>Wait 20 minutes before operating the desk. If the problem persists, please take a video of the issue and contact after-sales support at support@yfs.life.</p>