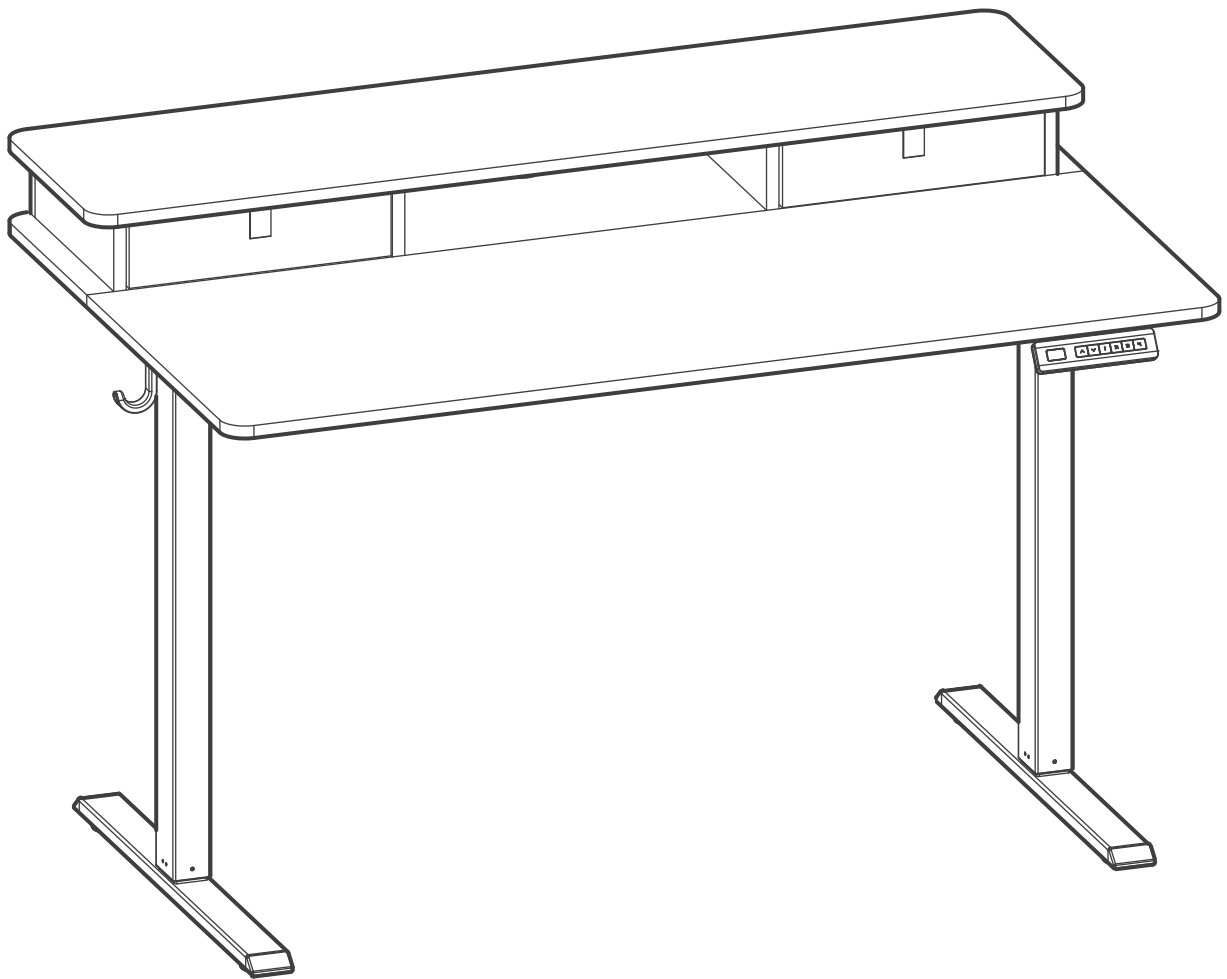


ASSEMBLY INSTRUCTIONS



Scan QR code for
installation video



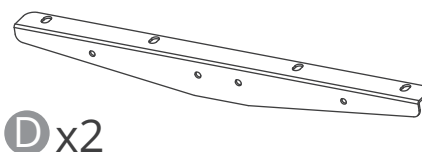
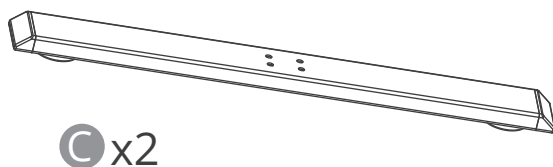
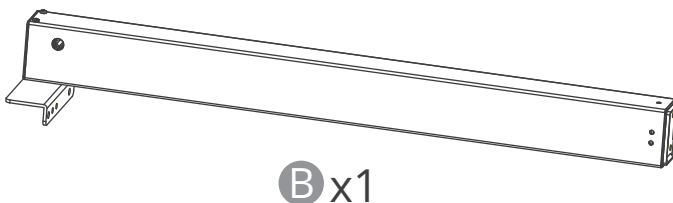
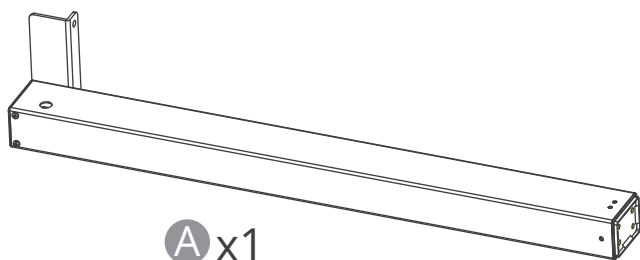
For assembly assistance,
✉ support@yfs.life 🌐 yfs.life/sdk-9020



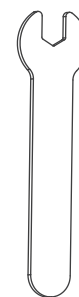
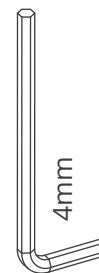
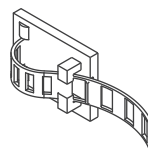
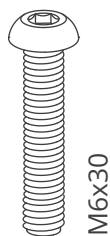
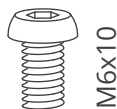
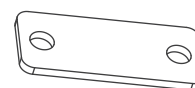
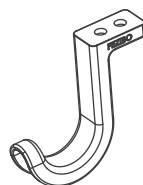
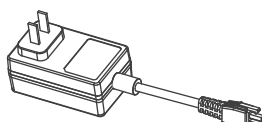
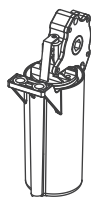
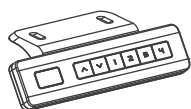
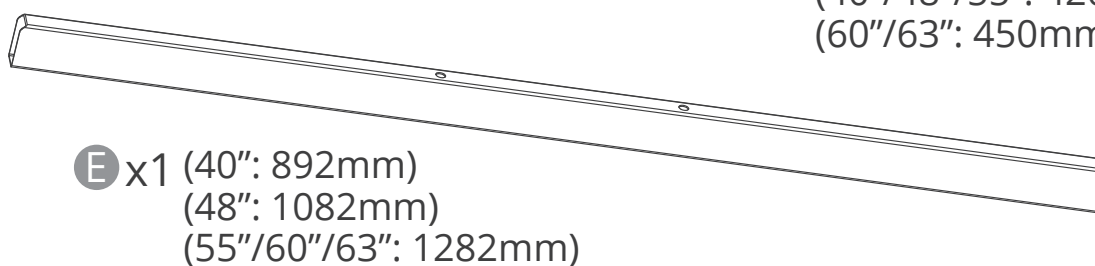
Caution

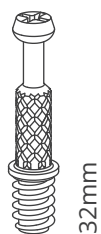
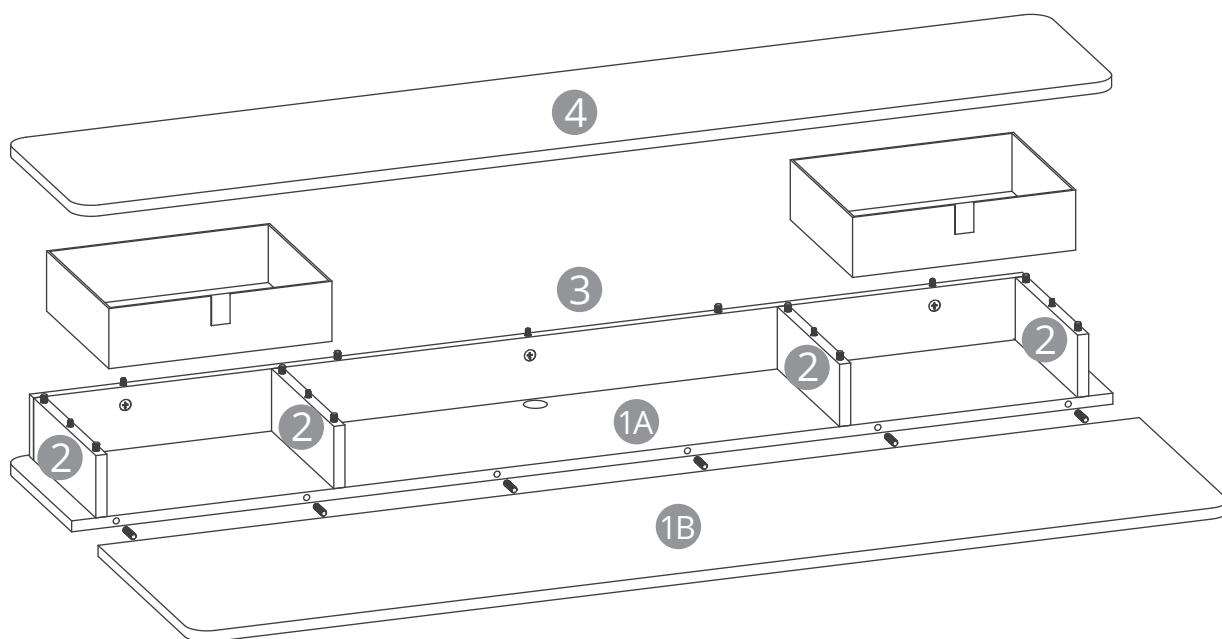
- Wipe clean with a cloth dampened in a mild cleaner.
- Keep children and animals away from the desk during use. Ensure the desktop is not touching any walls.
- Remove obstacles taller than 20"/51cm from underneath the desk.
- Operate only in a working environment temperature of 32°F-104°F/0°C-40°C.
- Keep product away from corrosive gases, liquids and dusty objects.
- Keep hands, feet and other body parts in a safe position during operation. Anti-collision is not automatically enabled when reset.
- The company does not bear any warranty or liability for damage and human injury caused by any abnormal or un-intended operation of the equipment.
- It is necessary to perform a manual reset after the initial installation or powercycling the equipment.





(40"/48"/55": 420mm)
(60"/63": 450mm)

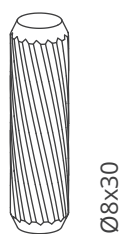




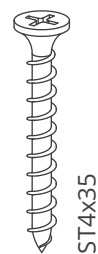
A x7



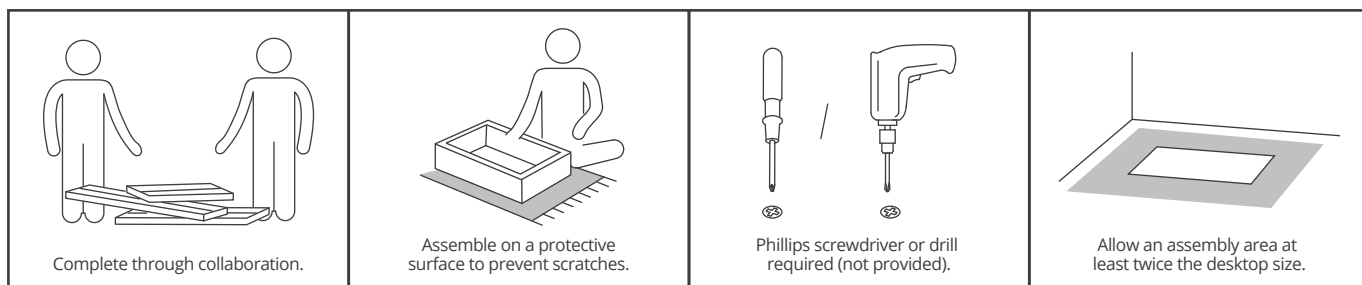
B x7

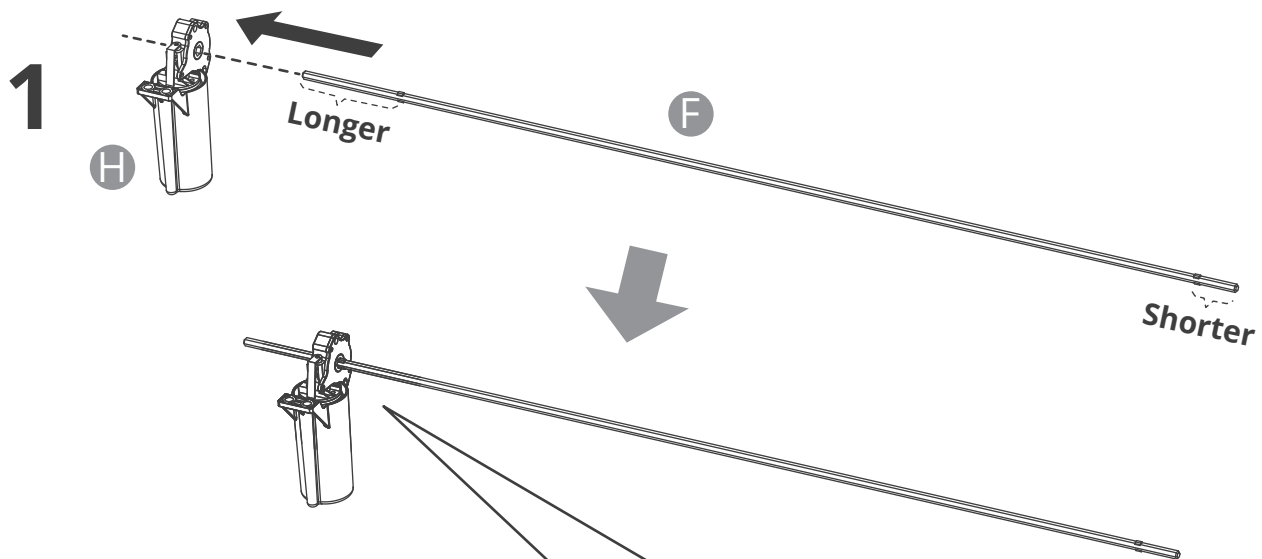


C x21 (40"
100cm)
x22 (48"/55"
120cm/140mm)
x23 (60"/63"
152mm/160cm)

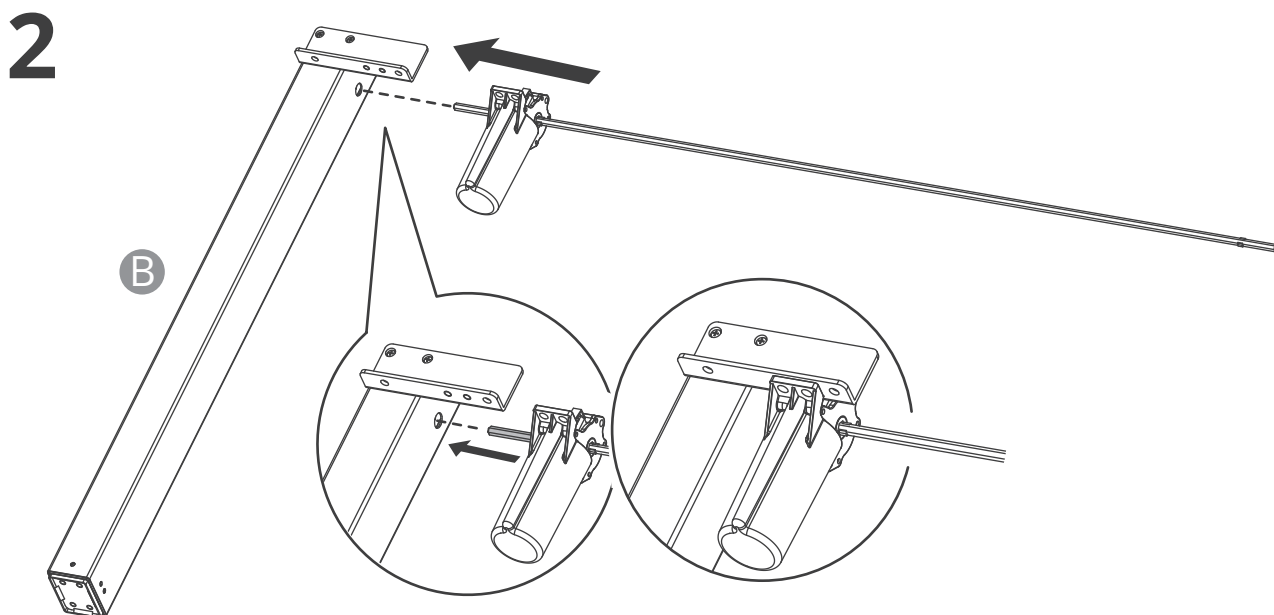
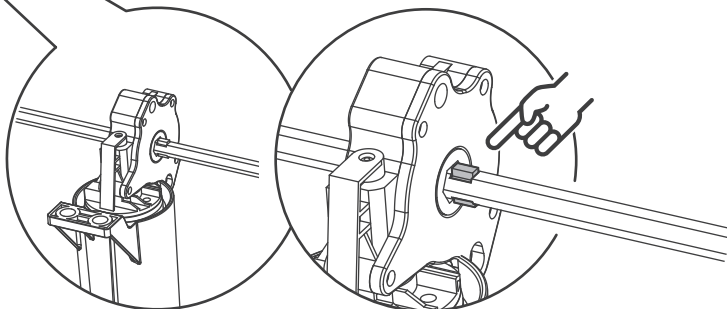
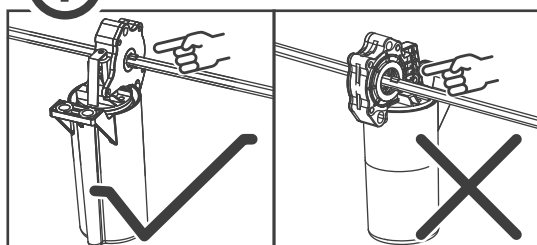


D x11

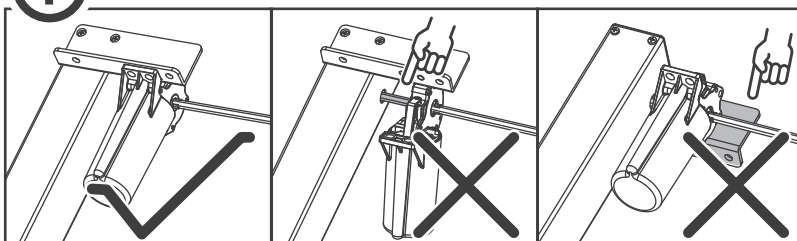




i Do not install in the reverse direction.



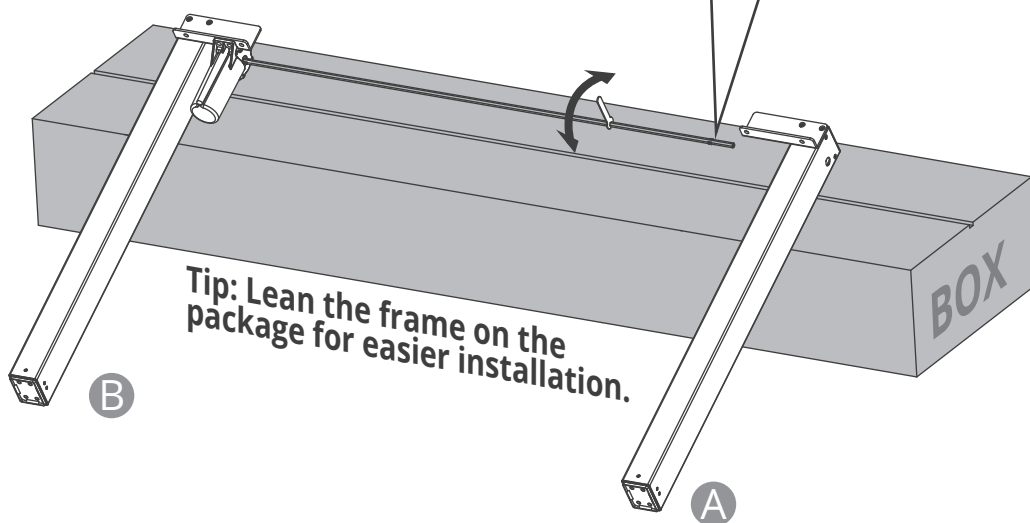
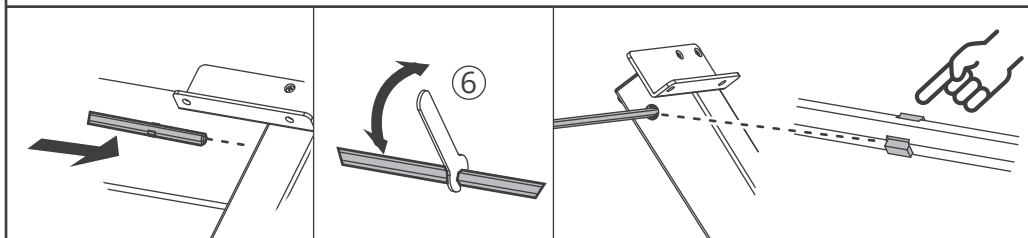
i Align the holes and pay attention to the direction.



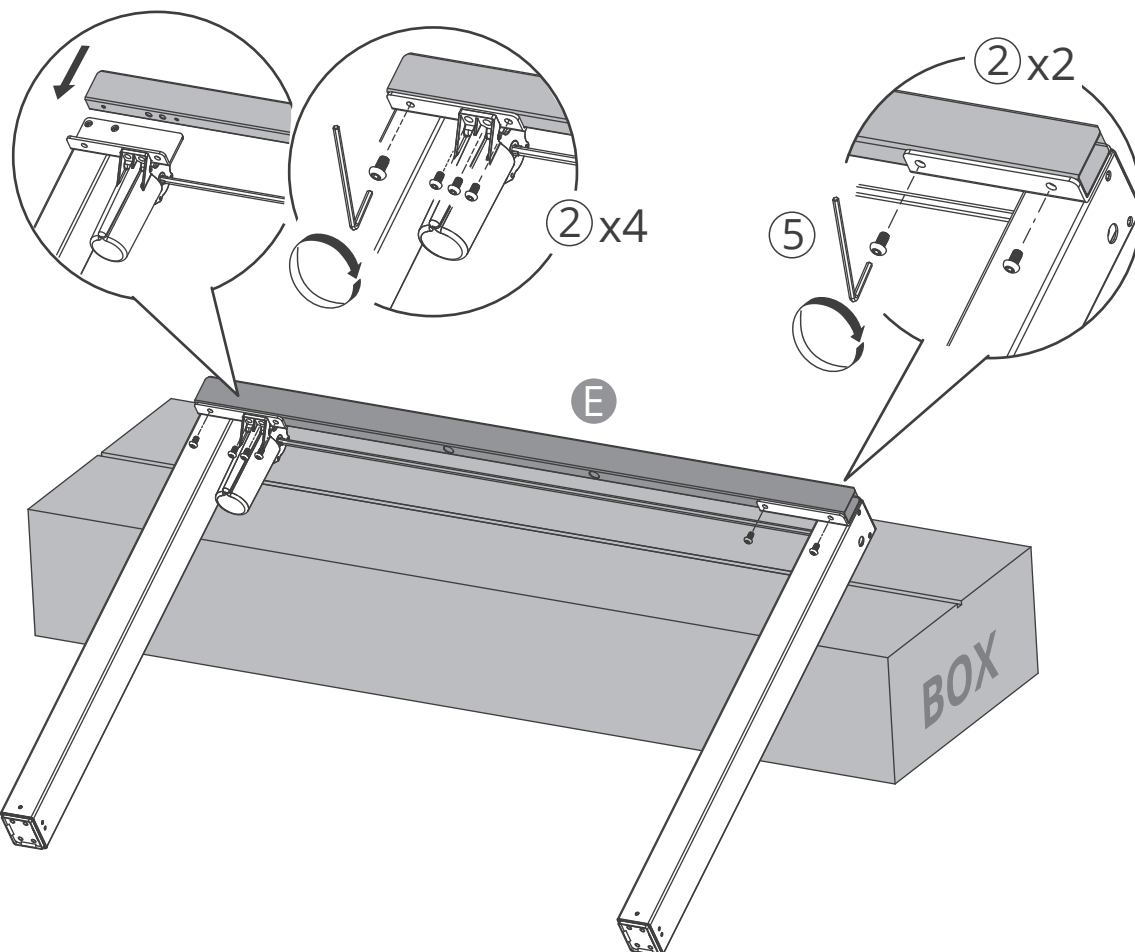
3



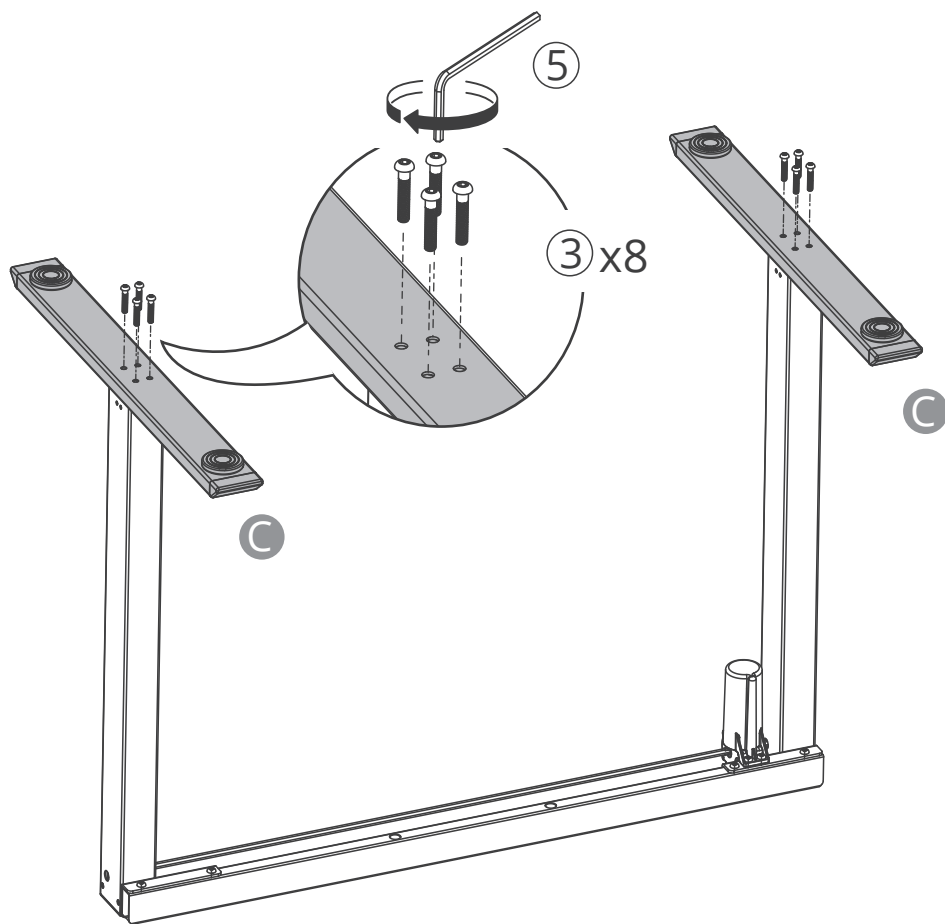
Note: Use a wrench to align and fully insert the hexagonal sync rod until the locking point engages to avoid uneven height adjustment.



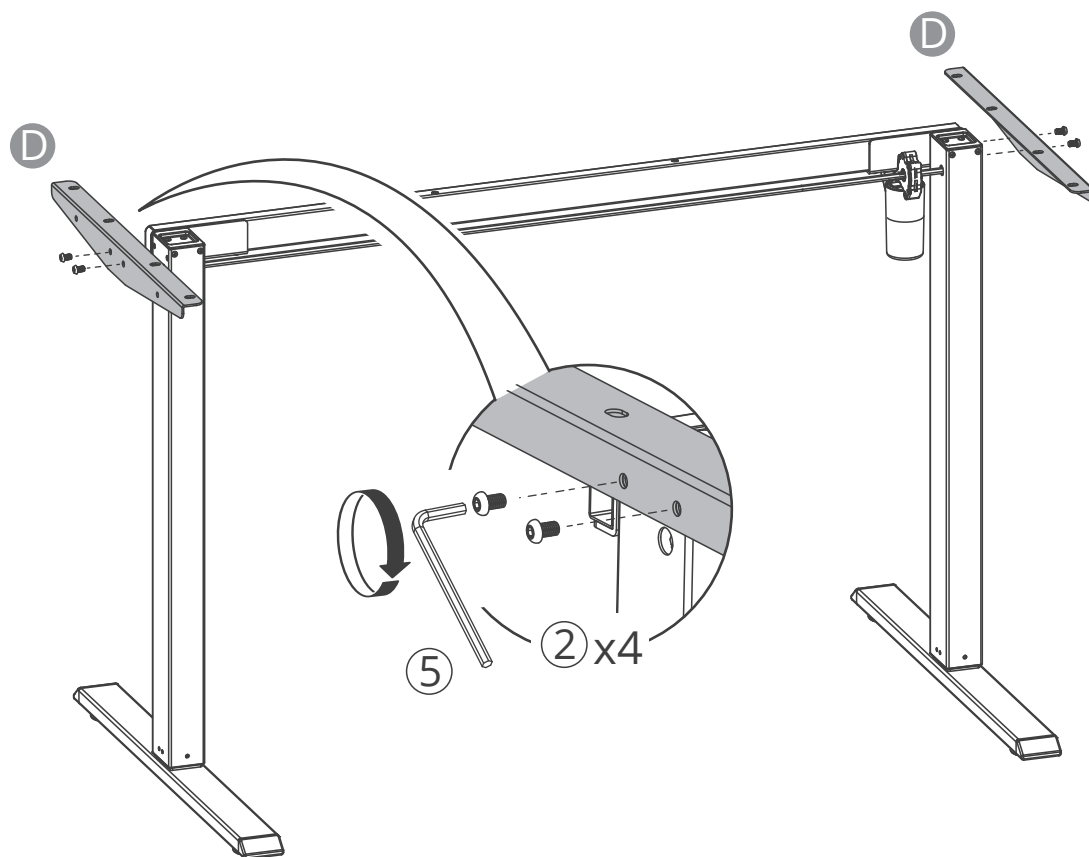
4



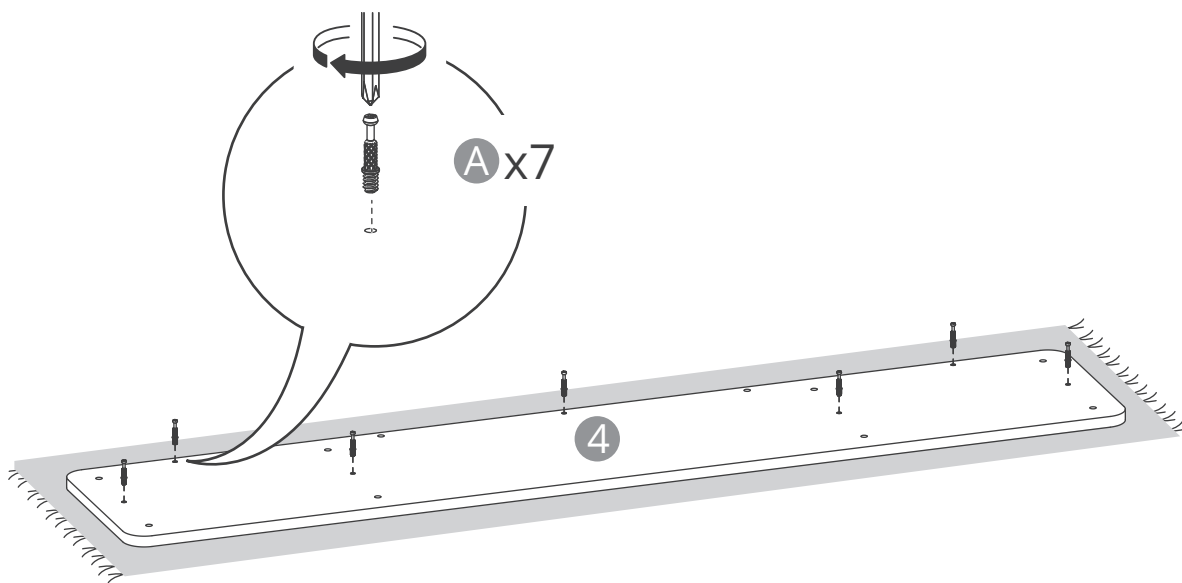
5



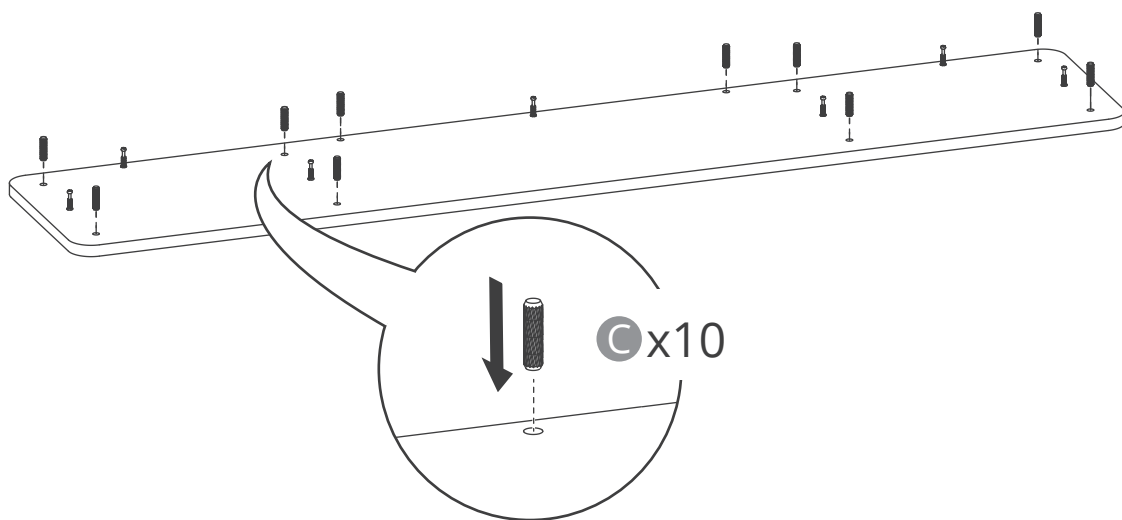
6



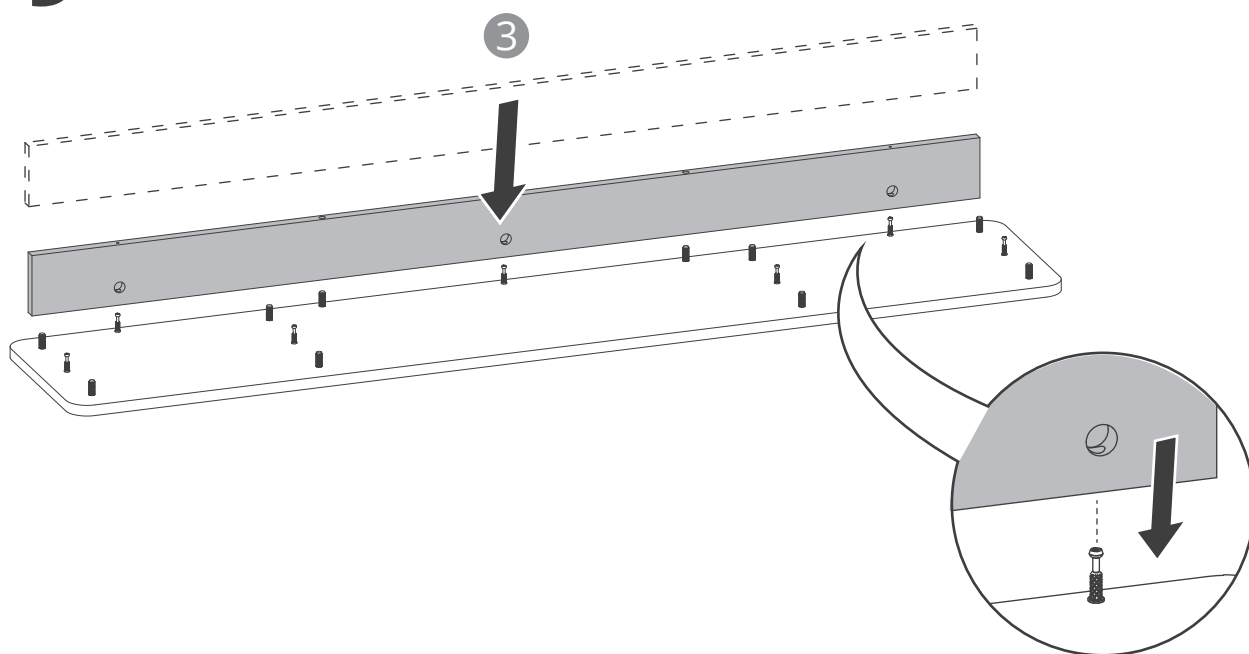
7



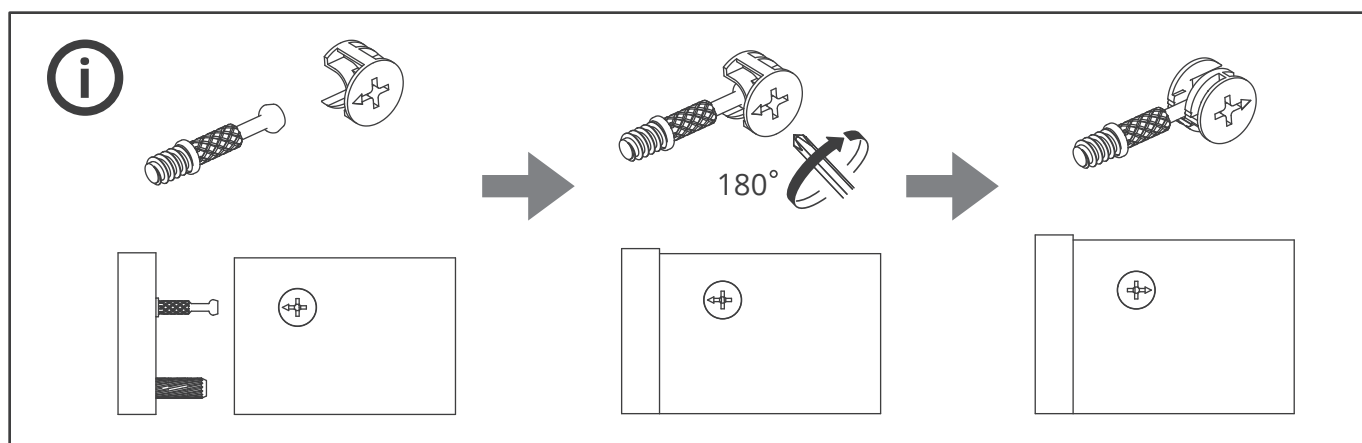
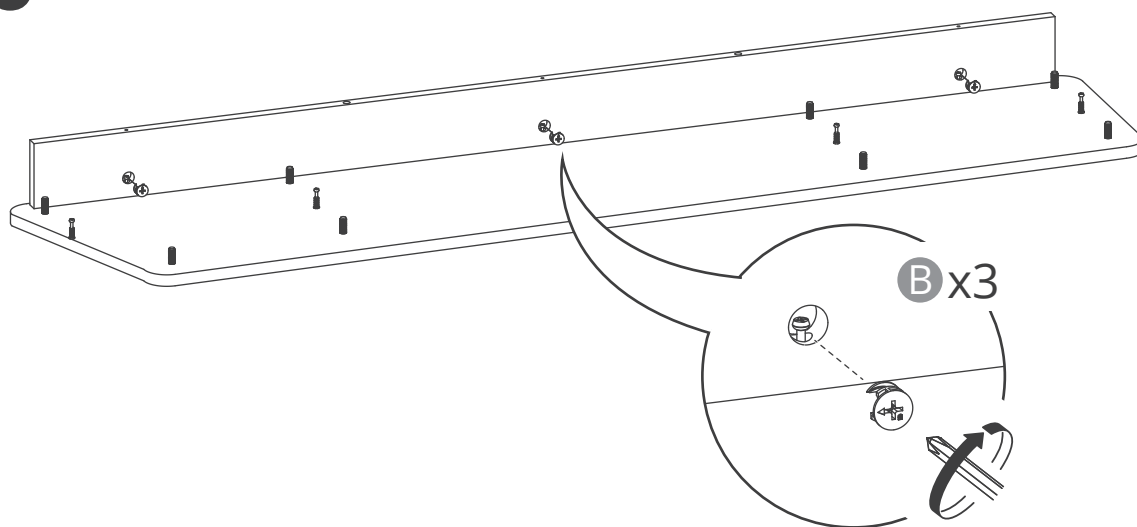
8



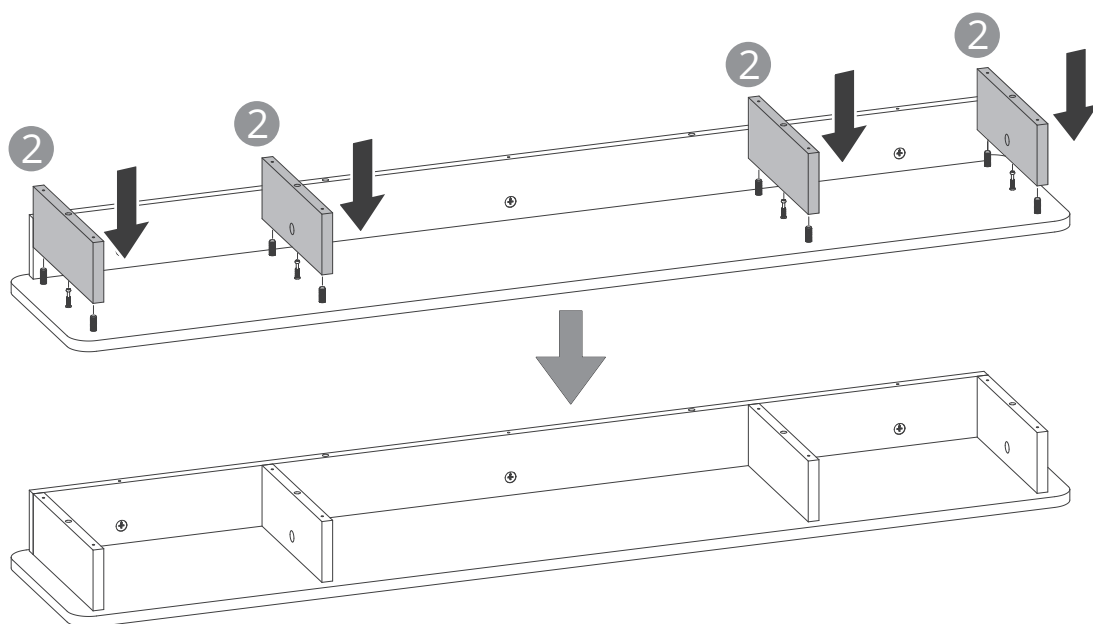
9



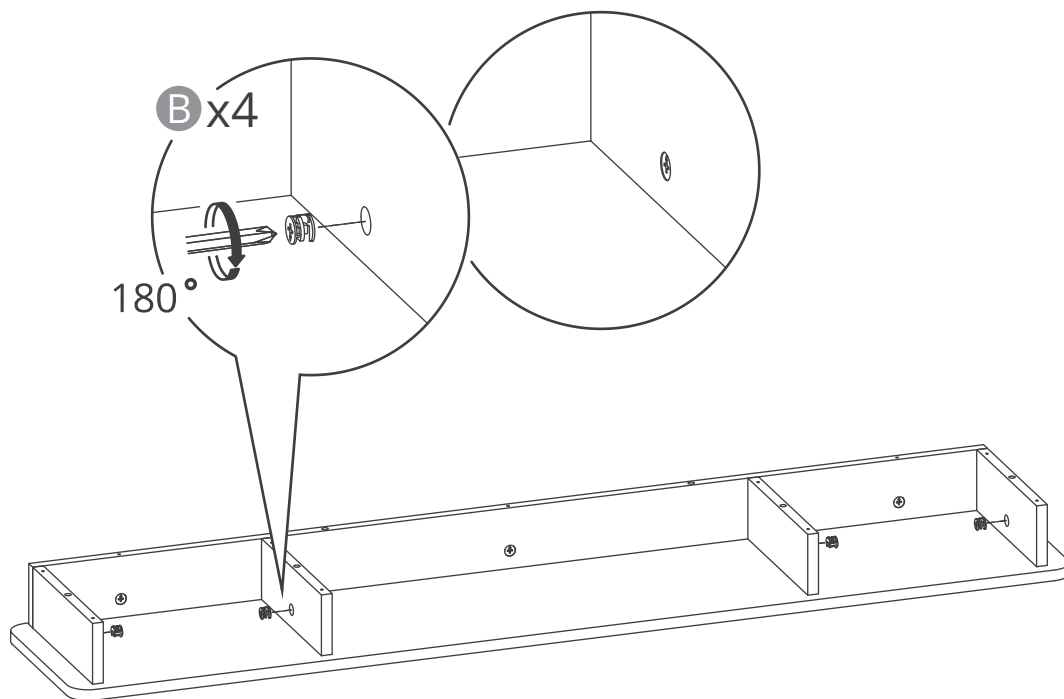
10



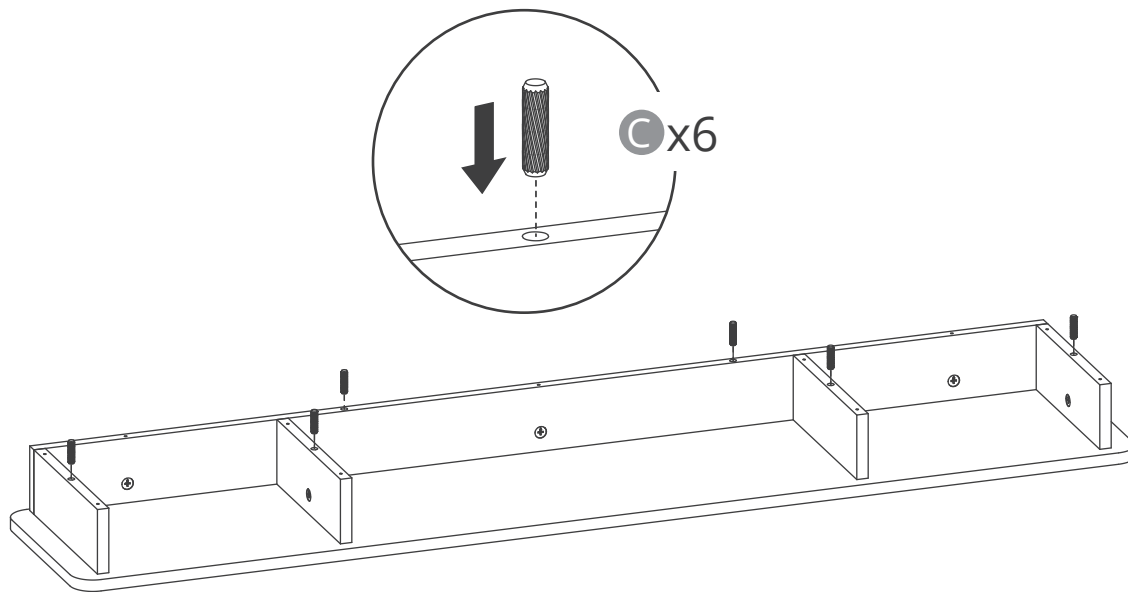
11



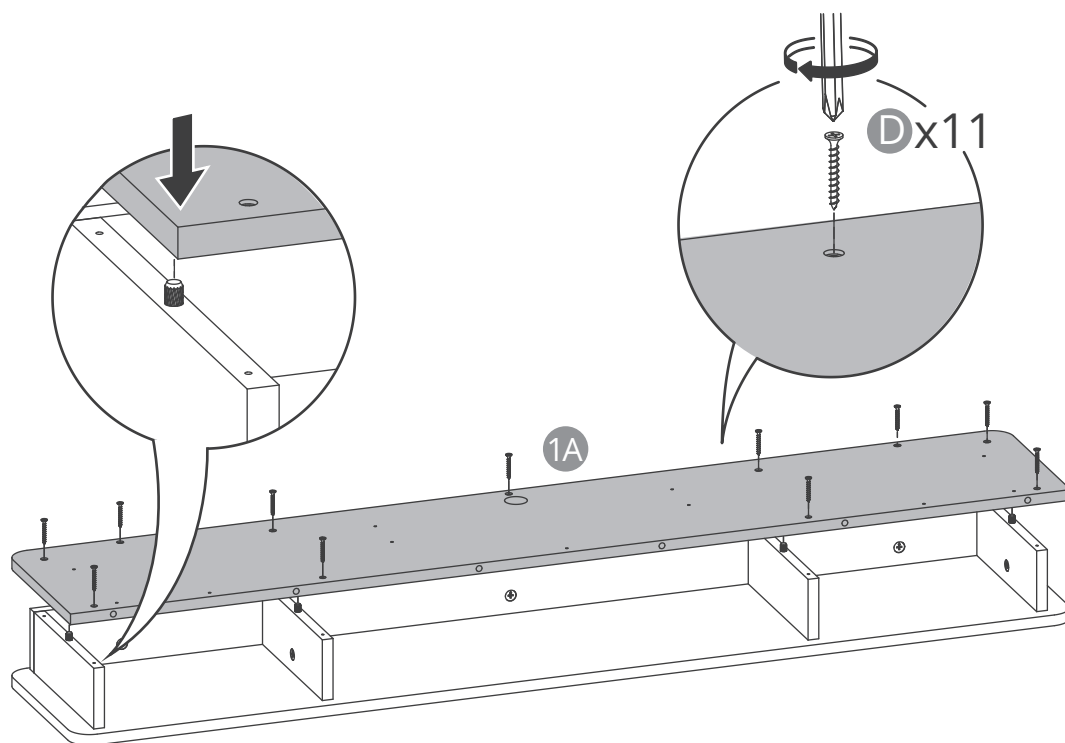
12



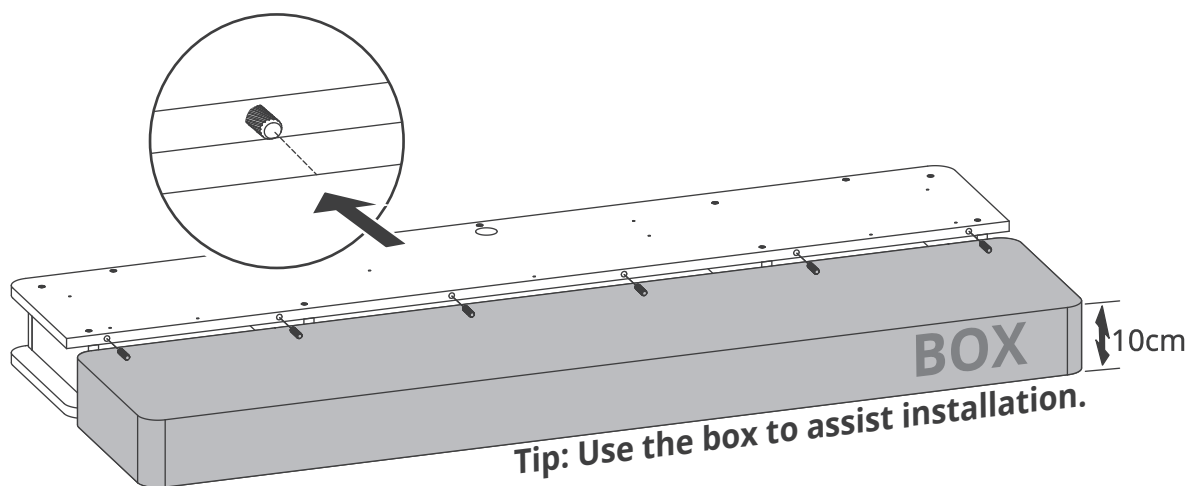
13



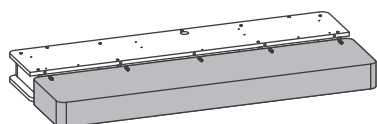
14



15

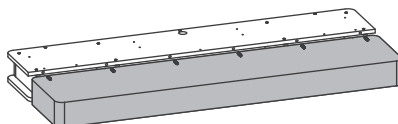


40"
(100cm)



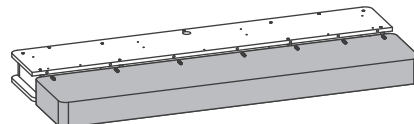
Ⓢx5

48"/55"
(120cm/140cm)



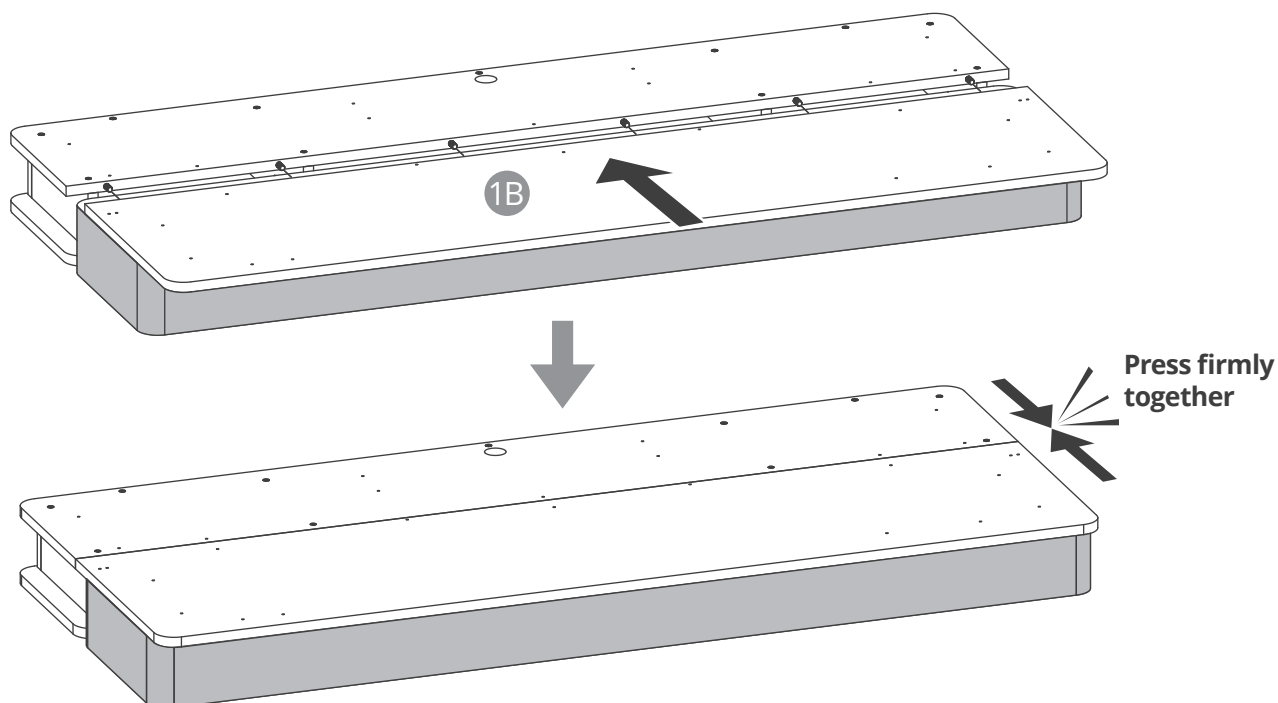
Ⓢx6

60"/63"
(152cm/160cm)

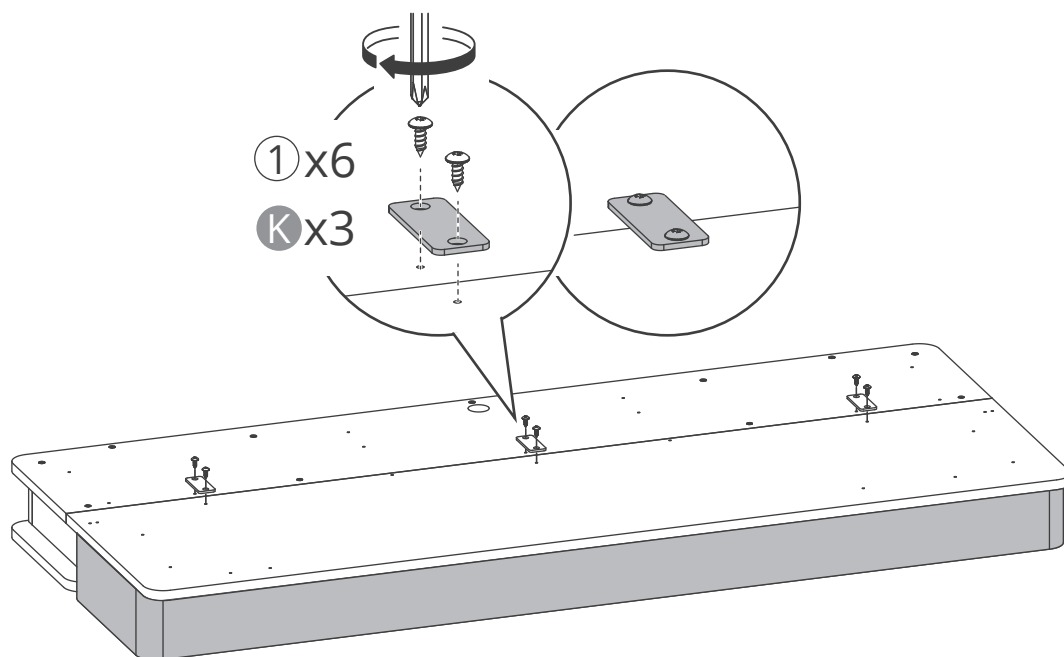


Ⓢx7

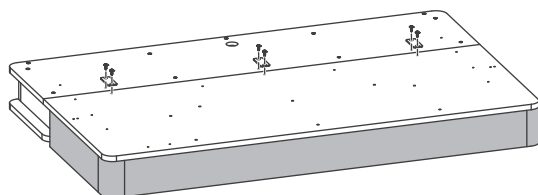
16



17

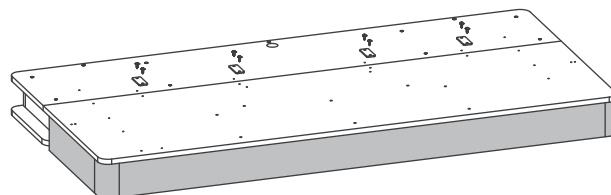


40"/48"/55"/60"
(100cm/120cm/140cm/152mm)



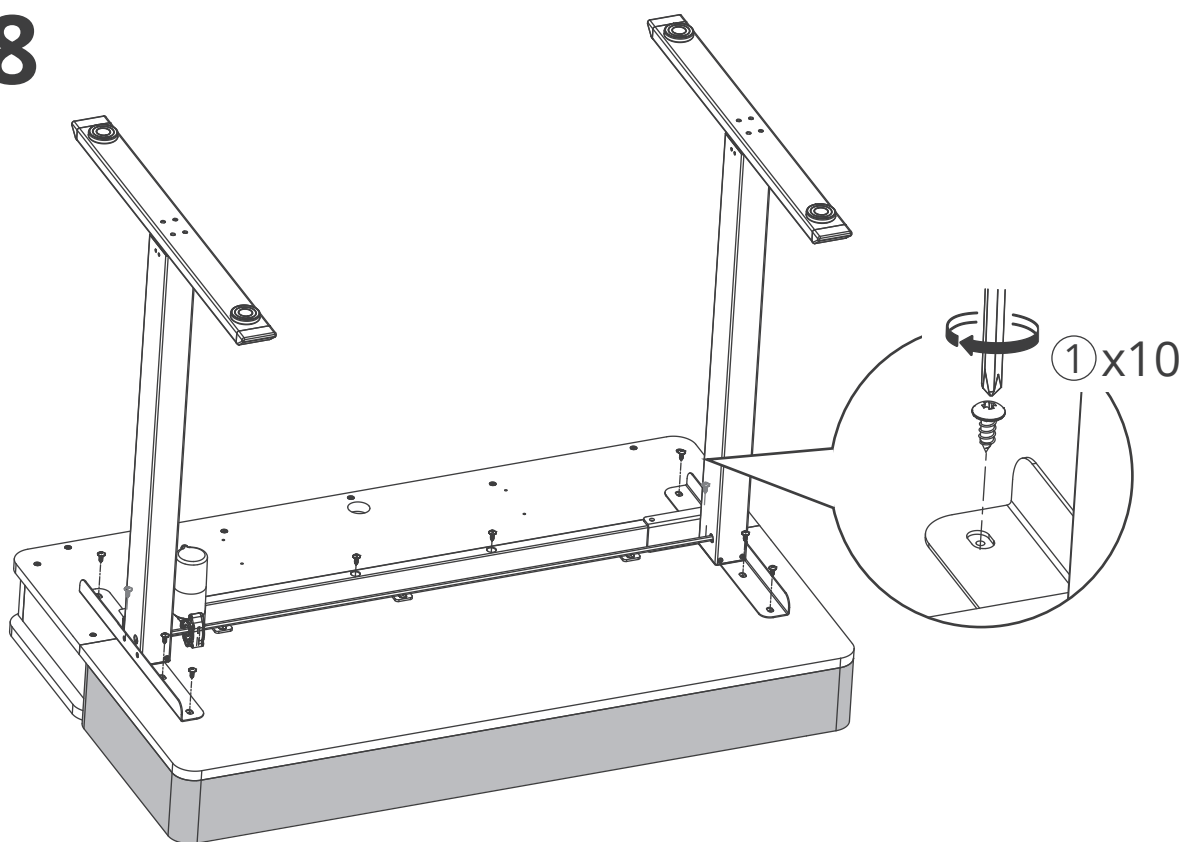
①x6 Kx3

63"
(160cm)

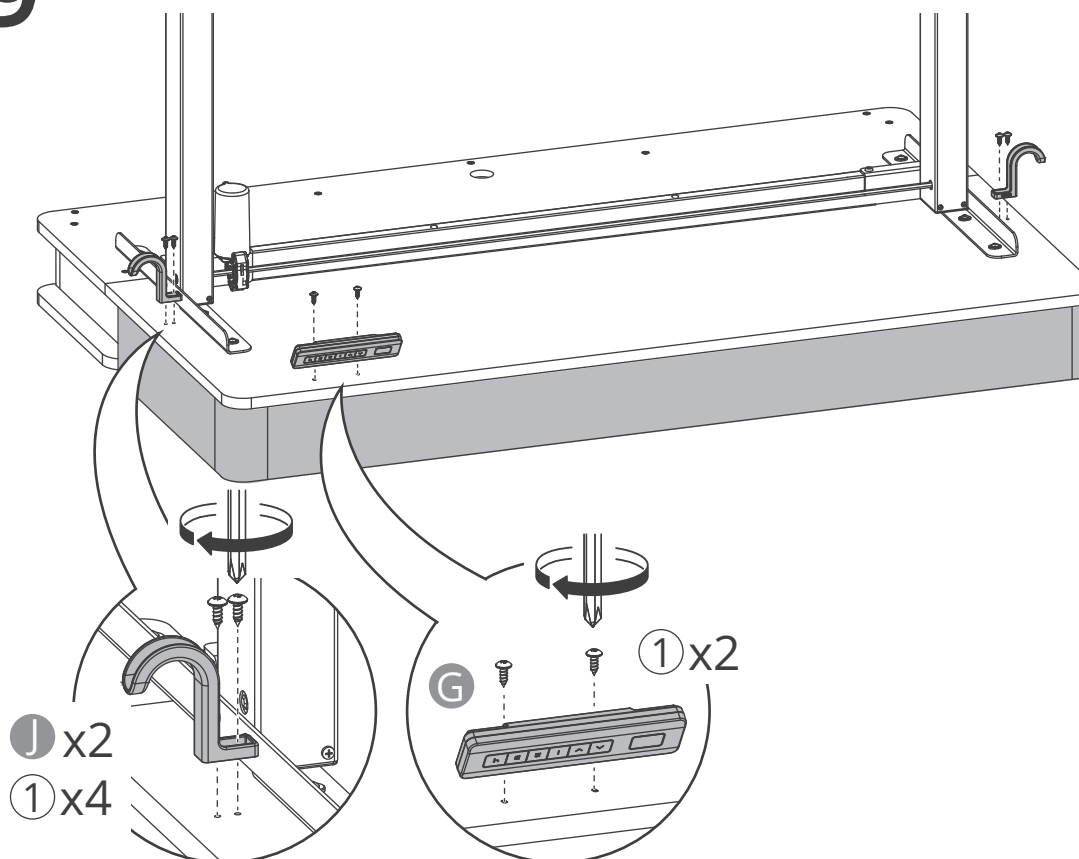


①x8 Kx4

18



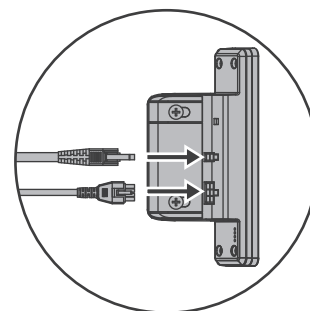
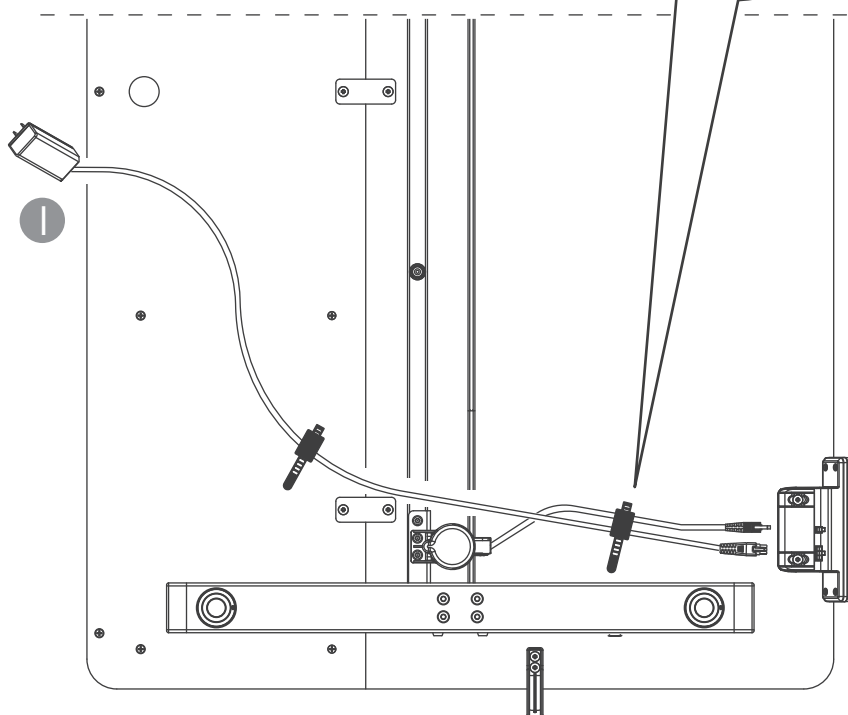
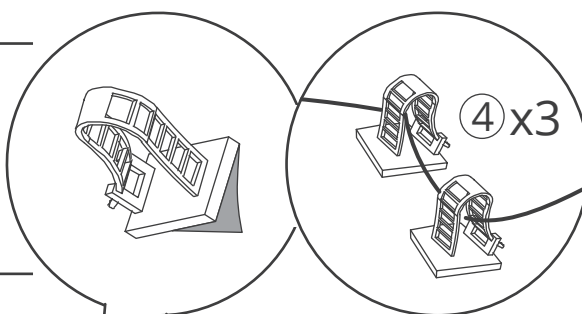
19



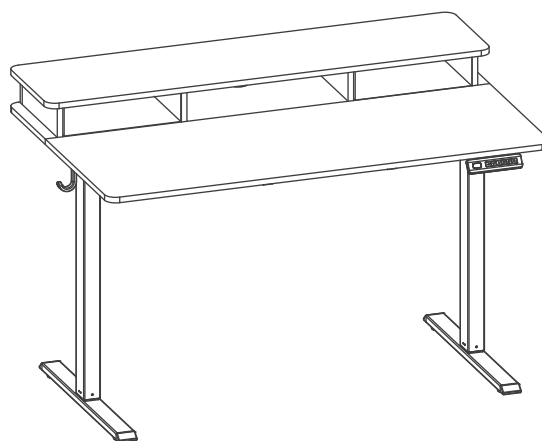
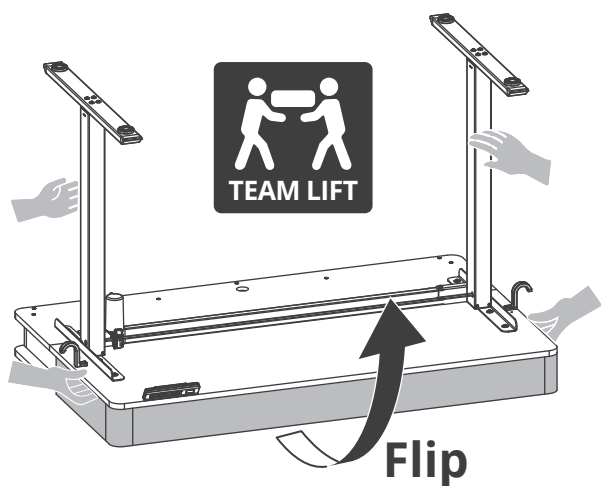
20



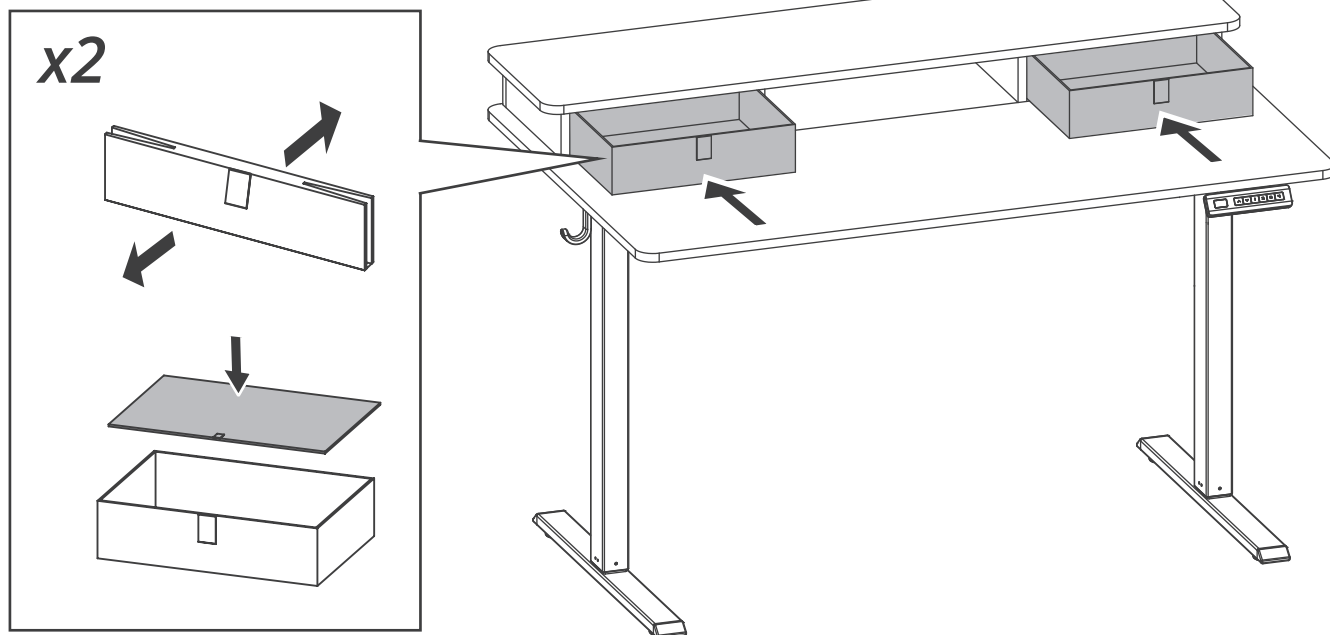
To prevent the power connectors from loosening, please use cable clips to secure the cable.



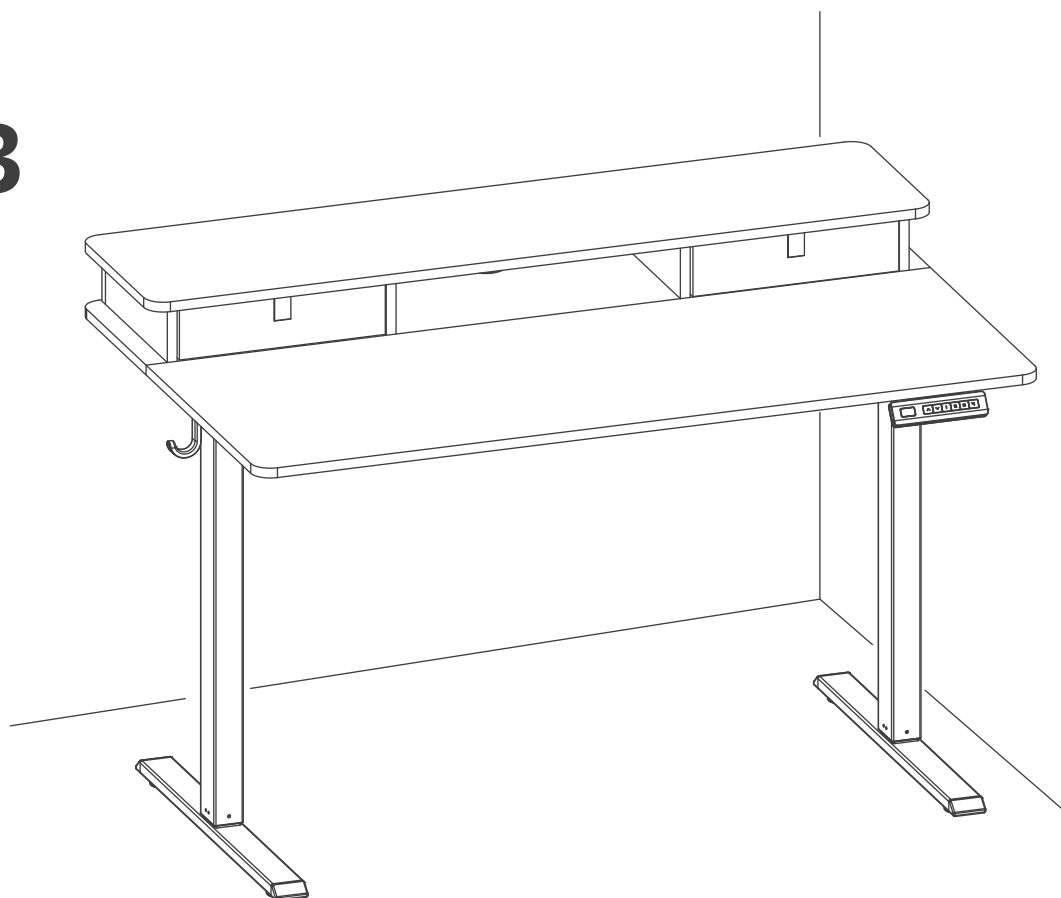
21



22



23



Keypad User Guide



Height Adjustment

Press and hold the "▲" or "▼" button to adjust the height.



Memory Heights

1. Briefly press the memory button "1" / "2" / "3" / "4". The desk will automatically move to the corresponding preset height.
2. Default memory key heights: Key 1: 28.3 in (72/73 cm), Key 2: 35.4 in (89/90 cm), Key 3: 41.3 in (104/105 cm), Key 4: 46.4 in (117/118 cm).



Memory Height Setting

Press and hold the "▲" or "▼" button to adjust the desk to the desired height. Press and hold the "1" / "2" / "3" / "4" button for 3 seconds until the numbers on the display start flashing, indicating that the current height has been successfully saved.



Child Lock

1. Lock: Simultaneously press and hold the "1" and "2" buttons for 3 seconds. When the display shows "Loc," the desk is locked and cannot be adjusted.
2. Unlock: Simultaneously press and hold the "1" and "2" buttons for 3 seconds. When the display changes from "Loc" to showing the desk height, the child lock is released.



Reset

1. Press and hold "▼" to lower the desktop to its lowest achievable position, then release.
2. Press and hold "▼" for 5 seconds until "RST" appears, then release.
3. Press and hold "▼" again: The desktop will lower further and rebound, and the current height will be displayed. Release the button to complete the reset.

Frequently Asked Questions (FAQ)

One-Sided Desk Lifting

Possible Cause

The sync rod is not installed correctly.

Solution

Check if the sync rod is fully inserted into the leg column. If not, lower the desk to its lowest position and reinstall the sync rod referring to the leg installation sticker or the instruction manual.

If the above steps do not solve the problem, please take a video of the issue and contact after-sales support at support@yfs.life.

<p>Handset Malfunction or No Response</p>	<p>Possible Causes</p> <ol style="list-style-type: none"> 1. Power is not connected correctly. 2. Controller has poor contact or is malfunctioning. 3. Fuse is blown or the power module is faulty. <p>Solution</p> <p>Disconnect all cable connections and reconnect them. Check if all cables are connected correctly and tightly. Make sure the power plug is inserted into the power outlet.</p> <p>If the above steps do not solve the problem, please take a video of the issue and contact after-sales support at support@yfs.life.</p>
<p>Desk Tilting or Unbalanced</p>	<p>Possible Causes</p> <ol style="list-style-type: none"> 1. Improper installation causing imbalance. 2. One column or footpad is not level. <p>Solution</p> <ol style="list-style-type: none"> 1. Review the installation steps to ensure each column is correctly installed and the desk is level. 2. Adjust the footpad height to level the desk. 3. If unresolved, record a video of the issue and contact customer support at support@yfs.life.
<p>Unusual Noise or Irregular Movement During Height Adjustment</p>	<p>Possible Causes</p> <ol style="list-style-type: none"> 1. The desktop load exceeds the recommended limit (not more than 50kg / 110lbs). 2. Loose connections in the desk—especially near the sync rod. 3. The motor may be faulty. <p>Solution</p> <ol style="list-style-type: none"> 1. Check if the items on the desktop exceed the weight limit and reduce the load if necessary. 2. Inspect and tighten all screws and connectors to secure the desk structure. 3. If the issue persists after these steps, record a video of the problem and contact customer support at support@yfs.life.
<p>Handset displays "RST," "E07," or "E08"</p>	<p>Possible Cause</p> <p>Poor connection of the motor cable.</p> <p>Solution</p> <p>Verify that all cable connections are correct and secure, and then perform a reset. If the problem persists, please take a video of the issue and contact after-sales support at support@yfs.life.</p>
<p>Handset displays "HOT"</p>	<p>Possible Cause</p> <p>The desk has entered overheat protection mode.</p> <p>Solution</p> <p>Wait 20 minutes before operating the desk. If the problem persists, please take a video of the issue and contact after-sales support at support@yfs.life.</p>

